



Doctoral Schools

Babeş-Bolyai University

Cluj-Napoca



UNIVERSITATEA BABEŞ-BOLYAI
BABEŞ-BOLYAI TUDOMÁNYEGYETEM
BABEŞ-BOLYAI UNIVERSITÁT
BABEŞ-BOLYAI UNIVERSITY

TRADITIO ET EXCELLENTIA



UNIVERSITATEA BABEȘ-BOLYAI
BABEȘ-BOLYAI TUDOMÁNYEGYETEM
BABEȘ-BOLYAI UNIVERSITÄT
BABEȘ-BOLYAI UNIVERSITY

TRADITIO ET EXCELLENTIA

Doctoral Schools

Babeș-Bolyai University

Cluj-Napoca

Babeş-Bolyai University is a public institution of higher education in Cluj-Napoca (Kolozsvár, Clausenburg), a city located in the heart of Transylvania, with over 300,000 permanent inhabitants and an addition, approximately 50,000 students during the academic year ranging from September to July. The history of higher education in Cluj-Napoca and the roots of the Babeş-Bolyai University (UBB) dates back to the Jesuit college founded in 1581 by the Prince of Transylvania, Stephen Báthory. In this college Latin, Hebrew, and Greek were taught and graduates could earn the titles of Baccalaureus, Magister and Doctor. The rich heritage of higher education in Cluj-Napoca, is assimilated, cherished and passed on to students, teachers and to the entire city community. The city of Cluj-Napoca became the leading center in Information Technology related activities in Transylvania, partly due to the large number of highly qualified graduates in these fields from UBB.

*Momentarily UBB is the largest university of the country, and is ranked in a constant manner in the first position in the Romanian University Metaranking, initiated by the Romanian Ministry of Education and Research in 2016, combining all the major international academic rankings of universities. The British QS STAR audit has evaluated UBB as an international university, with excellence in teaching and research (QS****).*

UBB is a multilingual and multicultural institution with competitive Bachelor, Master and Doctoral programs and with a valuable infrastructure (libraries, classrooms, laboratories, sport facilities). Following the multicultural traditions in Transylvania and the internationalization trends in science, it offers bachelor and master programs in four languages (Romanian, Hungarian, German and English). The low level of taxes (compared to other countries in the European Union) and the rich social, cultural and scientific life of the city are important reasons for many students in choosing our University for their studies.



Cluj-Napoca. View from the Fortress Hill (Dealul Cetățuia)



Babeş-Bolyai University. Courtyard of the main building



Aula Magna. The University Ceremony Hall



The importance and significance of doctoral studies in UBB is summarized by the statement of the Rector, Prof. Dr. Daniel David: "Babeş-Bolyai University values all three academic missions – education, research, and relationship to community -, but, as a world-class/research-intensive university, UBB puts the research at the core of its academic activities, thus having an active education (i.e., disseminating not only knowledge, but also the modality of knowledge generation) and an innovative relationship to society. In such a university the doctoral programs are "the generative core of the core" and therefore, let us make sure that at UBB the doctoral programs are active, diverse (i.e., covering all our programs), and of the highest quality, in order to keep and develop our world-class university status."

Doctoral (PhD) studies are organized at UBB in 31 doctoral schools in the following fields: Accounting, Administrative Sciences, Cinematography and Media, Biology, Chemical Engineering, Chemistry, Communication, Cybernetics and Statistics, Economics, International Affairs, Education Sciences, Environmental Sciences, Finance, Geography, Geology, History, Informatics, Informatic Economics, International Relations and European Studies, Law, Management, Marketing, Mathematics, Philology, Philosophy, Physics, Political Sciences, Psychology, Science of Sport and Physical Education, Sociology, Theatre, Theology. Around 400 students are enrolled each year. Doctoral studies are organized both as full-time and part-time programs. For EU candidates there are in each year more than 300 state-supported tuition free positions, and among these there are also around 150 available scholarships. A considerable number of PhD positions with tuition are also approved in each year by the university Senate.

The Institute for Doctoral Studies at Babeş-Bolyai University coordinates all the administrative activities for doctoral studies, operating under the guidance of the Council for Doctoral Studies, and the councils of the doctoral schools. This structure ensures the unity of the doctoral studies, provides a framework for interdisciplinary approach, and facilitates communication between doctoral schools. The Council for Doctoral Studies includes nationally and internationally acknowledged academics, who are doctoral supervisors at UBB. The present director of the Council for Doctoral Studies is Prof. Dr. Zoltán Néda.

János Bolyai, mathematician



Victor Babeş, biologist



Admission

The admission to doctoral studies is done through an annual competition organized by the doctoral schools of UBB, coordinated by the Institute for Doctoral Studies. The annual competition takes place in two sessions, on in the middle of July and the second one in the beginning of September. Holders of a master's degree (MSc) diploma or an equivalent diploma may participate at the admission exam. For registering, the candidate will choose first a doctoral supervisor, and competes for one of the positions coordinated by that supervisor. Technical details of the admission process are made public on the homepage of the Doctoral Studies Institute (<https://doctorat.ubbcluj.ro/eng/important-dates/>).

Doctoral studies usually cover a period of 3 academic years and a possible extension of 4 more years for the public defense of the thesis. The thesis should be the result of the research activity carried out by the doctoral student. After a successful defense the thesis has to be validated by the National Council for Attestation of Academic Titles, Diplomas and Certificates (CNATDCU). The title of Doctor, with the corresponding acronym Dr., is given through an order of the ministry of national education.

Doctoral studies may also be organized as joint PhD's, and in this case the doctoral student from UBB has simultaneously two doctoral supervisors. The second doctoral supervisor will be chosen with the agreement of the first one, after the enrollment at UBB, and can be either from Romania or from another country. Recently the PhD candidate can enroll also in the European doctorate program, implying participation in international research internships with total length over 4 months. A comprehensive internationalization of the PhD studies is a primary goal for UBB. Most of the doctoral schools from UBB offers their PhD level courses in English and

News related to the activity of the doctoral school from UBB, academic life of PhD students and their important achievements are published regularly at the PhD news site of the Doctoral Studies Institute (<http://news.doctorat.ubbcluj.ro/>).



Mathematics and Computer Science	5
Director Prof. Dr. Gabriela CZIBULA	
Physics.....	6
Prof. dr. Vasile CHIȘ	
Chemistry.....	9
Director Prof. Dr. Ion GROSU	
Chemical Engineering.....	10
Director Prof. Dr. ing. Mircea CRISTEA	
Integrative Biology	11
Director Prof. Dr. Peter-Laszlo PAP	
Theoretical and Applied Geology.....	12
Director Ioan TANȚĂU	
Environmental Science	13
Director Prof. Dr. Laurențiu – Călin BACIU	
Geography	14
Director Prof. Dr. József BENEDEK	
History, Civilization, Culture.....	15
Director Prof. Dr. Maria CRĂCIUN	
Population Studies and the History of Minorities.....	17
Director Assoc. Prof. Dr. Ion CĂRJĂ	
Philosophy.....	18
Director Assoc. Prof. Mihaela FRUNZĂ	
International Relations and Security Studies	19
Director Assoc. Prof. Dr. Găzdac Cristian ANTON	
“International Relations and European Studies/European Paradigm”	21
Director Prof. Dr. Melania-Gabriela CIOT	
Sociology	22
Director Prof. Dr. Dégi László CSABA	
“Evidence-Based Assessment and Psychological Interventions”	23
Director Prof. Dr. Aurora SZENTÁGOTAI – TĂTAR	
“Applied Cognitive Psychology”	24
Director Prof. Dr. Andrei MIU	
“Education, Reflection, Development”	25
Director Prof. Dr. Cristian STAN	
Doctoral School “Didactica. Tradition, Development, Innovation”	26
Director Prof. Univ.Dr. Liliana CIASCAI	
Administration and Public Policy	27
Director Prof. Dr. Cătălin – Ovidiu BABA	
“Communication, Public Relations and Advertising”	28
Director Prof. Dr. Delia Cristina BĂLAȘ (BALABAN)	
Political and Communication Sciences.....	29
Director Gabriel BĂDESCU	
Linguistic and Literary Studies.....	30
Director Prof. Adrian CHIRCU	
Hungarian Studies	31
Director Conf. univ. dr. habil. T. SZABÓ Levente	
Law	32
Director Prof. Ovidiu-Laurențiu PODARU Ph.D.	
Physical Education and Sport	33
Director Prof. Dr. Emilia – Florina GROSU	
Theatre and Film.....	34
Director Prof. Ioan POP-CURȘEU, Ph.D.	
Economics and Business Administration.....	35
Director Prof. Dr. Alexandru TODEA	
“Isidor Todoran” Doctoral School in Orthodox Theology.....	37
Director Pr. Prof. Dr. Vasile STANCIU	
“Ecumene” Doctoral School in Theology.....	38
Director Prof. Dr. Lehel LÉSZAI	
“Religion, culture, society” Doctoral school in Roman Catholic Theology	39
Prof. dr. habil. HOLLÓ László	
Doctoral School of Engineering.....	40
Director Assoc. Prof. Dr. ing. habil. Zoltan – Iosif KORKA	

Institute for doctoral studies website: <https://doctorat.ubbcluj.ro/eng/>

PhD News website: <https://news.doctorat.ubbcluj.ro/>

Doctoral School Mathematics and Computer Science

Doctoral supervisors Mathematics

Prof. univ. dr. Octavian AGRATINI - retired
Operator Theory, Linear Approximation Processes, Quantum Calculus

octavian.agratini@ubbcluj.ro

Prof. univ. dr. Dorin ANDRICA - retired
Geometry, Critical Point Theory, Lie Groups, Geometric Mechanics

dorin.andrica@ubbcluj.ro

Prof. univ. dr. BARICZ Árpád
Orthogonal Polynomials and Special Functions

arpad.baricz@ubbcluj.ro

Prof. univ. dr. Simion-Sorin BREAZ
Modules, Abelian Groups, Rings, Homological Algebra

simion.breaz@ubbcluj.ro

Conf. univ. dr. Brigitte-Erika BRECKNER
Topological Semigroups, Functional Analysis, Critical Point Theory, Analysis on Fractals

brigitte.breckner@ubbcluj.ro

Conf. univ. dr. Florina-Adriana BUICĂ
Qualitative Theory of ODEs, Bifurcation Theory, Dynamical Systems

florina.buica@ubbcluj.ro

Conf. univ. dr. Teodora-Maria CĂTINAȘ
Approximation Theory, Numerical Method

teodora.catinas@ubbcluj.ro

Prof. univ. dr. Septimiu CRIVEI
Module Theory, Category Theory

septimiu.crivei@ubbcluj.ro

Prof. univ. dr. Teodor-Silviu GROȘAN
Theoretical Mechanics, Fluid Mechanics, Porous Media, Heat Transfer

teodor.grosan@ubbcluj.ro

Prof. univ. dr. Mirela KOHR
Fluid Mechanics, Potential Theory, Complex Analysis, Partial Differential Equations

mirela.kohr@ubbcluj.ro

Prof. univ. dr. KRISTÁLY Alexandru
Calculus of Variations, Critical Point Theory, Elliptic Problems, Riemann-Finsler Geometry, Geometric Analysis, Optimization on Manifolds

alexandru.kristaly@ubbcluj.ro

Conf. univ. dr. Hannelore LISEI
Stochastic Analysis, Variational Calculus

hannelore.lisei@ubbcluj.ro

Prof. univ. dr. Andrei-Dorin MĂRCUȘ
Representation Theory of Groups and Algebras

andrei.marcus@ubbcluj.ro

Prof. univ. dr. Sanda MICULA
Numerical Methods for Integral Equations, Approximation Methods for Boundary Value Problems, Numerical Solutions of Fluid Flow Problems

sanda.micula@ubbcluj.ro

Conf. univ. dr. George Ciprian MODOI
Abelian and Triangulated Categories, Homological Algebra

george.modoi@ubbcluj.ro

Prof. univ. dr. NÉMETHI András
Algebraic Geometry, Algebraic Topology, Singularity Theory

nemethi.andras@renyi.mta.hu

Prof. univ. dr. Adrian-Olimpiu PETRUȘEL
Nonlinear Analysis, Differential Equations, Fixed Point Theory

adrian.petrusel@ubbcluj.ro

Conf. univ. dr. Cornel PINTEA
Differential Geometry and Riemannian Geometry, Algebraic Topology and Differential Topology, Convexity and Monotone Operators

cornel.pintea@ubbcluj.ro

Prof. univ. dr. Radu PRECUP
Nonlinear Functional Analysis, Ordinary and Partial Differential Equations

radu.precup@ubbcluj.ro

Prof. univ. dr. Grigore SĂLĂGEAN – retired
Complex Analysis, Geometric Function Theory

grigore.salagean@ubbcluj.ro

The main purpose of the doctoral programs in the fields of Mathematics and Computer Science, organized by the Doctoral School of Mathematics and Computer Science (SDMI), is to promote high quality fundamental and applied research in Mathematics and Computer Science, as well as interdisciplinary research, by involving doctoral students in the most important and recent research projects of the faculty, including international cooperation with academic and industrial partners. The existence of the two doctoral domains (Mathematics and Computer Science) within the doctoral school represents a strategic advantage, with potential for collaboration and generator of interdisciplinary results.

The mission of SDMI is to create valuable researchers in the scientific domains of Mathematics and Computer Science, to enable doctoral students to conduct high quality research in the fields of Mathematics and Computer Science, as well as to improve the scientific quality of the doctoral students' guidance and of the scientific quality of doctoral theses. The main objective of the doctoral programs in Mathematics and Computer Science within SDMI is to produce a valuable scientific activity, visible internationally: scientific publications, methods, and algorithms. SDMI creates a competitive research environment for doctoral students in the fields of Mathematics and Computer Science, which will ensure the development of research and innovation skills specific to the two fields. Also, it promotes excellence in the fundamental and applicative research in Mathematics and Computer Science and stimulates the dissemination of the research results at the national and international levels, both in the academic and non-academic communities.



Doctoral supervisors Computer Science

Prof. univ. dr. Anca-Mirela ANDREICA
Applied Computational Intelligence

anca.andreica@ubbcluj.ro

Prof. univ. dr. Camelia CHIRA
Metaheuristics, Computational Intelligence, Complex Systems

camelia.chira@ubbcluj.ro

Conf. univ. dr. Florin CRĂCIUN
Software Engineering, Software Verification, Programming Languages, Type Systems, Formal Methods, Blockchain

mihai.craciun@ubbcluj.ro

Prof. univ. dr. Gabriela CZIBULA
Computational Intelligence, Machine Learning, Distributed Artificial Intelligence

gabriela.czibula@ubbcluj.ro

Prof. univ. dr. István CZIBULA
Search Based Software Engineering, Artificial Intelligence

istvan.czibula@ubbcluj.ro

Conf. univ. dr. Adrian DĂRĂBANT
Image Processing, Deep Learning, Machine Learning, Convolutional Networks, Distributed Systems, Databases

sergiu.darabant@ubbcluj.ro

Prof. univ. dr. Laura-Silvia DIOȘAN
laura.diosan@ubbcluj.ro

Nature-inspired Computation, Machine Learning, Applied Computational Intelligence

Conf. univ. dr. GASKÓ Noémi

noemi.gasko@ubbcluj.ro

Nature-inspired Optimization Algorithms, Computational Game Theory, Complex Networks

Prof. univ. dr. Simona MOTOGNA

simona.motogna@ubbcluj.ro
Software Engineering, Software Quality, Empirical Methods in Software Engineering

Prof. univ. dr. Bazil PÂRV – retired
bazil.parv@ubbcluj.ro
Software Engineering, Modeling and Simulation, Scientific Computation

Prof. univ. dr. Horia F. POP
horia.pop@ubbcluj.ro
Computational Intelligence, Intelligent Data Analysis

Associated Ph. D. Coordinators

Prof. univ. dr. Valer-Daniel BREAZ
Complex Analysis, Geometric Function Theory

dbreaz@uab.ro

CONTACT

Director of the doctoral school:

Gabriela CZIBULA

E-mail: gabriela.czibula@ubbcluj.ro

Web: <https://www.cs.ubbcluj.ro/invatamant/programa-academice/doctorat/>

Doctoral supervisors

Prof. dr. Simion AȘTILEAN

Research interests

- Development of new nano-systems based on plasmonic and hybrid nanoparticles incorporating specific biomolecules, as anti-cancer drugs and molecular reporters for applications in nanomedicine and, particularly, in cancer nano-therapy (targeted cancer nano-chemotherapy, nano-photo-dynamic therapy, plasmonic hyperthermia, multimodal therapy, molecular imaging and diagnostic, etc.)
- Development of nanostructured metallic films or colloidal nanoparticles as effective substrates for enhanced detection and identification of various (bio)molecules and biomarkers via optical spectroscopy including Raman / SERS, localized surface plasmon resonance LSPR-UV-VIS, steady-state and time-resolved fluorescence, metal-enhanced fluorescence (MEF), etc.
- Implementation of reliable and less expensive nanofabrication and nano-structuration procedures (colloidal self-assembling, nanosphere lithography, thin film deposition, chemical synthesis and bio-synthesis of plasmonic nanoparticles, Reactive-ion etching (RIE) processing etc.

simion.astilean@ubbcluj.ro; <https://www.nanobiophotonics.ro>

Prof. dr. Gheorghe-Lucian BAIA

Research interests

- Materials for tissue engineering applications
- Carbonaceous based structures for technological applications
- Materials with controllable structure and morphology for environmental applications

lucian.baia@ubbcluj.ro; <http://www.phys.ubbcluj.ro/~lucian.baia>

Prof. dr. Monica-Maria BAIA

Research interests

- Vibrational investigations of pharmaceuticals, photocatalysts, carbon-based nanomaterials, nanostructures for environmental and biomedical applications by Raman and IR absorption spectroscopy, as well as SERS

monica.baia@ubbcluj.ro; www.phys.ubbcluj.ro/~monica.baia

dr. Zoltan BALINT

Research interests

- Automatic solutions for medical image analysis
- Personalized, 3D printed supports for radiation therapy by using radioresistant, radiotransparent materials with a 3D image acquisition and processing approach

zoltan.balint@ubbcluj.ro; <http://www.phys.ubbcluj.ro/~zoltan.balint>

dr. Diana-Ancuța BENEĂ

Research interests

- Ab initio methods for band structure calculations in solids and nanomaterials
- Ab initio methods for description of the magnetic and spectroscopic properties in solids/nanostructured materials (Compton scattering, positron annihilation, XPS spectroscopy)

diana.benea@ubbcluj.ro; <https://municheos.wixsite.com/dianabenea>

Prof. dr. Titus Adrian BEU

Research interests

- Force fields and molecular dynamics of biopolymers for gene delivery
- Solvation/crystallization of calcites and CO₂ sequestration
- Nanofluidics. Transport through carbon nanotubes and ion channels

titus.beu@ubbcluj.ro; <https://phys.ubbcluj.ro/~titus.beu>

dr. Ioan BOTIZ

Research interests

- Development of polymeric nanostructures/crystals in thin films by employing the self-assembly/crystallization method; understanding the microstructure-property relationship in polymer films using inclusively the AFM technique
- Fabrication of polymeric surface relief patterns via nanoimprint lithography; generation of multifunctional micro- and nano-structured platforms based on organic, inorganic, insulating, conductive or emissive nanoparticles
- Development on unique home-made equipment for processing of polymer thin films
- Synthesis of carbonic bidimensional nanomaterials (graphene oxide, reduced graphene oxide) in organic solvents
- Delivery of new polymer/fullerenes or polymer/graphene-like composite materials displaying optoelectronic, antimicrobial or thermoconductive properties for applications in photovoltaics, light-emitting diodes, field-effect transistors, automotive, etc.

ioan.botiz@ubbcluj.ro; <https://www.nanobiophotonics.ro/member/ioan-botiz-117>

Prof. dr. Vasile CHIȘ

Research interests

- Computational spectroscopy methods for investigating the electronic structure of biomolecules
- Conformational analysis of pharmacologically active compounds and study of ligand-receptor interactions
- Weak intermolecular interactions: the role of dispersion in weakly bound systems
- Adsorption of molecules on surfaces
- Photophysics of biomolecules
- Molecular and electronic structure of radiopharmaceuticals used in nuclear medicine for PET and SPECT imaging

vasile.chis@ubbcluj.ro; <https://phys.ubbcluj.ro/~vasile.chis>

Prof. dr. Grigore DAMIAN

Research interests

- Analysis of free radicals from food and drugs sterilized by irradiation
- Applications of RES spectroscopy in biology and medicine

grigore.damian@ubbcluj.ro; <https://phys.ubbcluj.ro/~grigore.damian>

Prof. dr. Leontin DAVID

Research interests

- Spectroscopic and magnetic investigation of biomolecular structures

leontin.david@ubbcluj.ro; <https://phys.ubbcluj.ro/~leontin.david>

Doctoral School of Physics

Doctoral supervisors

Prof. dr. Iosif Grigore DEAC

Research interests

- *Spintronics: Materials, physics and devices*
- *Electron correlation effects in oxides*
- *Magnetocalorics*
- *Multiferroics*
- *Ordered magnetic nanostructures*

iosif.deac@ubbcluj.ro; <https://phys.ubbcluj.ro/~iosif.deac>

Prof. dr. Radu FECHETE

Research interests

- *Development of new advanced physical methods, experimental (NMR, FT-IR, UV-VIS) and numerical for material characterization and production of biomaterials by electrospinning*

radu.fechete@ubbcluj.ro; rfechete@phys.utcluj.ro; <https://phys.utcluj.ro/PersonalFile/Radu.html>

CS. I dr. Monica-Olivia FOCȘAN

Research interests

- *Nano(bio)photonics and plasmonics with emphasis on synthesis, fabrication, characterization and biological applications of gold nanoparticles with different morphologies, and numerous types of tunable metallic nanostructures*
- *Design of multifunctional plasmonic nanoparticles or integrated microfluidic devices in different configurations, in view of biosensing, plasmon-induced photothermal therapy, bioimaging applications, as well as their controlled coupling with various emitters to extend the application fields of the fabricated hybrid plasmonic nanostructures*

monica.iosin@ubbcluj.ro; <https://www.nanobiophotonics.ro/member/monica-focsan-100>

Prof. dr. Ioan GROSU

Research interests

- *Condensed Matter Theory*

ioan.grosu@ubbcluj.ro; https://phys.ubbcluj.ro/departamente/cstma/doc/cstma_personal.pdf

Prof. dr. Nicolae LEOPOLD

Research interests

- *Processes at the interface of plasmonic nanoparticles*
- *Clinical spectroscopy*

nicolae.leopold@ubbcluj.ro; www.phys.ubbcluj.ro/~nicolae.leopold

CS. I dr. Dana-Alina MAGDAȘ

Research interests

- *Applications of Isotope Ratio Mass Spectrometry (IRMS) in food and beverages authentication*
- *Development of new food and beverage recognition models based on acknowledged and/or emerging analytical approaches*
- *Metabolomics based on the association between spectroscopic methods and supervised statistical methods/artificial intelligence*
- *Detection and quantification of emerging pollutants in environmental matrices and their propagation along the food chain*

alina.magdas@itim-cj.ro; <http://ro.itim-cj.ro/portfolio/dr-magdas-dana-alina>

Prof. dr. Ladislau NAGY

Research interests

- *The theory of atomic collisions*
- *The study of ionization of atoms and molecules by charged particle impact*
- *Interactions of atoms and molecules with strong laser fields*
- *The interference of electron waves*

ladislau.nagy@ubbcluj.ro; <http://phys.ubbcluj.ro/~lnagy/>

Prof. dr. Zoltán NÉDA

Research interests

- *Statistical and computational physics*

zoltan.neda@ubbcluj.ro; <http://www.phys.ubbcluj.ro/~zneda>

Prof. dr. Petru PĂȘCUTĂ

Research interests

- *Fabrication and characterization of physical and structural properties of some new glasses and glass ceramics doped with 3d and 4f ions and co-doped with metallic nanoparticles (Au, Ag, Cu, Fe, Co, etc.) with possible application in electronics, telecommunications or medicine*

Petru.Pascuta@phys.utcluj.ro; <https://www.researchgate.net/profile/Petru-Pascuta>

Prof. dr. Simona PÎNZARU

Research interests

- *Translational biomolecular research: using Raman spectroscopy methods (NIR-Raman, SERS, Raman, or their combinations) and techniques in conjunction with other molecular and solid state physics methods to develop new innovative products and services in:*
- *Bioeconomy and circular economy: - New added value by-products from the exploitation of aquatic resources (blue bioeconomy)*
- *Nanostructured three-dimensional biomaterials of natural origin: structure, characterization and new applications for their innovative reuse and waste reduction*
- *Addressing issues still unsolved for a sustainable environment (ultrasensitive molecular detection, control, molecular monitoring, biotoxins, biomolecules from reusable materials)*
- *Plastisphere (life forms on plastic, biofilms, cyanobacteria, cyanotoxins, plastic-microorganisms interface)*
- *Nanoscience solutions to problems still unsolved in diagnostics and medical therapy; ultrasensitive molecular detection based on optical techniques (SERS, Raman resonance, electronics absorption)*
- *Nano-bio interface: interaction of nanomaterials with micro- and macroorganisms; nano risk*
- *Applied SERS: detection, molecular recognition, molecular monitoring of compounds of interest for various economic domains: pharmaceutical and cosmetics: (nano) formulations; polymorphism, molecular interactions), food sector (additives, pigments, forbidden substances, toxins, natural extracts), sustainable environment, health care*

simona.pinzaru@ubbcluj.ro; <https://bluebiosustain.granturi.ubbcluj.ro/>

Doctoral School of Physics

Doctoral supervisors

Prof. dr. Viorel POP

Research interests

- *New hard magnetic phases based on 3d transition metals or rare earths metals; Nanostructured/nanocrystalline magnetic phases coupled by interphase exchange interactions*

viorel.pop@ubbcluj.ro; https://phys.ubbcluj.ro/departamente/cstma/doc/cstma_personal.pdf

Prof. dr. Coriolan TIUȘAN

Research interests

- *Nanomagnetism*
- *Spintronics*
- *Thin Solid Films*
- *Patterned mesoscopic structures*

coriolan.tiusan@ubbcluj.ro; <https://nanospin.ro>

Prof. dr. Romulus TETEAN

Research interests

- *Core-shell magnetoelectric nanoparticles for biomedical applications*
- *Magnetic properties and magnetocaloric effect on selected transition metals compounds*
- *Electronic and magnetic properties on rare-earths-3d transition metals intermetallic compounds*

romulus.tetean@ubbcluj.ro; https://phys.ubbcluj.ro/departamente/cstma/doc/cstma_personal.pdf

Prof. dr. Mihai TODICĂ

Research interests

- *Polymers physics and soft condensed matter*

mihai.todica@ubbcluj.ro; https://phys.ubbcluj.ro/departamente/cstma/doc/cstma_personal.pdf



CONTACT

Director of the doctoral school:

Prof. dr. Vasile CHIȘ

E-mail: vasile.chis@ubbcluj.ro; doctorat.phys@ubbcluj.ro

Web: <http://phys.ubbcluj.ro/departamente/sd.htm>

Doctoral School in Chemistry

Doctoral supervisors

Professor Eng. Claudia Valentina CIMPOIU, PhD

Chromatography, Antioxidant Activity
claudia.cimpoi@ubbcluj.ro

Professor Eng. Luminița Camelia DAVID, PhD

Chemistry of natural compounds
luminita.david@ubbcluj.ro

Professor Eng. Tiberiu FRENȚIU, PhD

Analytical chemistry
tiberiu.frentiu@ubbcluj.ro

Professor Ion GROSU, PhD

Supramolecular chemistry and stereochemistry
ion.grosu@ubbcluj.ro

Associate professor Niculina Daniela HĂDADE, PhD

Organic and supramolecular chemistry
niculina.hadade@ubbcluj.ro

Professor Gabriela Nicoleta NEMEȘ, PhD

Inorganic and theoretical chemistry
gabriela.nemes@ubbcluj.ro

Professor Eng. PAIZS Csaba, PhD

Chemical biotechnology
csaba.paizs@ubbcluj.ro

Professor Radu Lucian SILAGHI-DUMITRESCU

Biochemistry and theoretical chemistry
radu.silaghi@ubbcluj.ro

Professor Eng. Anca Daniela SILVESTRU, PhD

Inorganic chemistry – coordination, organometallic and supramolecular chemistry
anca.silvestru@ubbcluj.ro

Academician Professor Cristian Sorin SILVESTRU

Inorganic chemistry – coordination, organometallic and supramolecular chemistry
cristian.silvestru@ubbcluj.ro

Professor Monica Ioana TOȘA

Biochemistry, Biotechnology
monica.tosa@ubbcluj.ro

Associated Ph. D. Coordinators

Professor Lorentz JÄNTSCHI, PhD

Theoretical chemistry
lorentz.jantschi@ubbcluj.ro

Associate professor Simona RADA, PhD

Inorganic chemistry
simona.rada@phys.utcluj.ro

CONTACT

Director of the doctoral school:

Professor Ion GROSU, PhD

E-mail: ion.grosu@ubbcluj.ro

Web: <http://www.chem.ubbcluj.ro/~sdc/>



The doctoral school in Chemistry is specialists in the field of inorganic chemistry, physical chemistry, organic chemistry and organometallic chemistry by approaching interdisciplinary areas of global interest such as: organometallic compounds of non-transition metals with potential applications in the storage and transfer of CO₂, ligands in the transition metal coordination chemistry, materials with special optical or electronic properties with applications in obtaining chemical sensors or in homogeneous catalysis, NMR contrast agents (imaging), compounds with potential biological activity (antitumor activity, anti-inflammatory activity) electrode materials (modified electrodes, organic and inorganic aerogels, thin films with special properties) with electrocatalytic properties and photo(electro)catalytic properties, (amperometric and potentiometric) electrochemical sensors/ biosensors for detection of chemical species of biotechnological and biomedical interest, electrodeposition of metals and composites, corrosion of metals and artifacts, synthesis and characterization of modified electrodes in electroanalytical applications, electrochemical processes in the environment, nano-materials, materials with special optical and electronic properties, with applications in obtaining new materials, catalysts, miniature electronic devices, molecular design and drug design, iterative-dendritic synthesis; melamine dendrimers by iterative-convergent synthesis, melamine dendrimers as “drug delivery systems”, design, synthesis, structure and properties of new technomimetic molecules (molecular machines) and of complex systems based on supramolecular associations, formation of supramolecular aggregates and their dynamics, guided by molecular recognition processes. Doctoral supervisors and doctoral students initiate and develop collaborations with prestigious research groups worldwide in the addressed fields, also pursuing the development of joint degree theses.



Doctoral School of Chemical Engineering



Doctoral School of Chemical Engineering trains high-profile qualified professionals for the field of chemical engineering, promoting education and research in agreement with the demands of society based on in-depth knowledge and excellence. The research carried out within the doctoral school is in line with the priority direction of advanced chemical engineering that conceives, develops new materials and applies modern chemical processes, energetically and economically efficient, designed in the spirit of sustainable development, operable in optimal conditions based on computer modeling and control, aiming an equally applicative, economic and social impact. The PhD graduates will valorize the highly skilled doctoral qualification and bright opportunities will be opened for their careers in companies, research institutions and universities.



Doctoral supervisors

CORMOȘ CĂLIN - CRISTIAN

Chemical reaction engineering. Process design and integration. Mathematical modelling and simulation of chemical and thermo-chemical systems. Process retrofit. Energy conversion systems. Gasification and combustion. Clean coal technologies. Renewable energy sources. Carbon Capture and Storage (CCS) technologies. Chemical looping. Energy vectors poly-generation systems. Techno-economic and environmental evaluations.
calin.cormos@ubbcluj.ro

CORMOȘ ANA-MARIA

Modelling and simulation of chemical and biochemical processes. Carbon Capture, Utilization and Storage (CCUS) technologies. Innovative energy conversion systems. Hydrogen production from renewable energy sources (biogas, biomass). Multi-scale modeling of gas-solid (catalytic and non-catalytic) processes. Techno-economic and environmental evaluations of industrial processes.
ana.cormos@ubbcluj.ro

CRISTEA VASILE MIRCEA

Modelling and simulation of chemical processes with concentrated and distributed parameters (CFD). Development of classical and advanced automatic control systems based on mathematical modelling; model-based predictive control. Modelling, optimization and control applications that implement artificial intelligence tools; artificial neural networks and fuzzy logic. Data mining. Wastewater treatment plant control and resources recovery; modelling and control of water flow and pollutant propagation in rivers.
mircea.cristea@ubbcluj.ro

TURDEAN GRAZIELLA LIANA

Applied physical chemistry. Thermodynamics and kinetics of the chemical reaction by electrochemical methods. Nano/materials for electrodes. Supramolecular and nanostructured redox bio/systems. Electroanalytical chemistry (i.e. amperometric bio/sensors, electrochemical techniques of electrode process investigation).

graziella.turdean@ubbcluj.ro

BARABÁS RÉKA

Preparation and characterization of nanomaterials with optimized properties based on process design and IoT.

reka.barabas@ubbcluj.ro

AGACHI PAUL ȘERBAN

Process Modeling; Simulation; Control and Optimization; Classical and Advanced Control Systems; Computer Aided Process Engineering (CAPE) Instruments; University Management; Research Management

agachip@biust.ac.bw; serban.agachi@ubbcluj.ro

ILEA PETRU

Electrochemical Process Technology and Engineering; Metal Recovery from Wastes studies related to: inorganic substances electrosynthesis, electrometallurgy and electrochemical technology applied in environmental remediation, protection and recycling.

pilea@chem.ubbcluj.ro; petru_ilea@yahoo.com

FAZAKAS JÓZSEF

Oxide Materials; Sol-gel Engineering; Nanomaterials.

chemicedramic@gmail.com

NAGY ZOLTAN KÁLMÁN

Professor of Chemical Engineering, Purdue University Development and application of process systems engineering approaches and tools for engineered product design and optimal process operation, with applications in pharmaceutical, fine chemical, biotechnology, food and agrochemical industries.
znagy@purdue.edu

CONTACT

Director of the doctoral school:

Prof.dr.ing. CRISTEA Vasile Mircea

E-mail: sdic.chem@ubbcluj.ro

Web: http://www.chem.ubbcluj.ro/~sdic/index_en.html

Doctoral School of Integrative Biology

Doctoral supervisors

Prof. dr. Horia BANCIU

Environmental molecular biology, Microbial ecology
horia.banciu@ubbcluj.ro,
<https://banciuhoria.wordpress.com/>

Prof. dr. Manuela BANCIU

Biochemistry, Molecular biology
manuela.banciu@ubbcluj.ro

Conf. dr. Anca BUTIUC

Plant molecular biology, Biotechnology, Genetics
anca.keul@ubbcluj.ro

C.S. dr. Vlad COJOCARU

Computational biochemistry, Structural biology
vlad.cojocaru@ubbcluj.ro

Conf. dr. Lujza KERESZTES

Phylogeography, Speciation, Aquatic insects
lujza.keresztes@ubbcluj.ro

Prof. dr. Bálint MARKÓ

Sociobiology, Ant ecology, Behavioural ecology
balint.marko@ubbcluj.ro

Prof. dr. Péter László PAP

Ornithology, Evolutionary biology, Ecological physiology
peter.pap@ubbcluj.ro,
<https://avianimmunoeecology.wordpress.com/plpap/>

Conf. dr. Mihai PUȘCAȘ

Biogeography, Phylogeography, Botany
mihai.puscas@ubbcluj.ro

Conf. dr. Eszter RUPRECHT

Plant ecology, Botany
eszter.ruprecht@ubbcluj.ro,
<https://plantecologyubb.wordpress.com/eszter-ruprecht/>

C.S. dr. Cristian SEVCENCU

Cardiovascular physiology, Bioelectronic medicine
cristian.sevcencu@ubbcluj.ro

Associated Ph. D. Coordinators

Prof.dr. Vasile CRISTEA

Botany, Phytosociology
vasile.cristea@ubbcluj.ro

Prof.dr. Nicolae DRAGOS

Algology, Cytology, Molecular Biology
nicolae.dragos@ubbcluj.ro

Prof.dr. Marcel PÂRVU

Phytopathology, Mycology, Phytotherapy
marcel.paru@ubbcluj.ro

Prof.dr. Elena RÁKOSY

Plant Genetics and Biotechnology, Molecular Biology
elena.rakosy@ubbcluj.ro

Prof.dr. László RÁKOSY

Entomology, Ecology, Zoology
laszlo.rakosy@ubbcluj.ro

Conf. dr. Lucian BARBU

Electron microscopy, Ultrastructure
lucian.barbu@ubbcluj.ro

Conf. dr. Dan GAFTA

Plant ecology, Phytosociology, Numerical analysis of data
dan.gafta@ubbcluj.ro

Conf. dr. Zoltán LÁSZLÓ

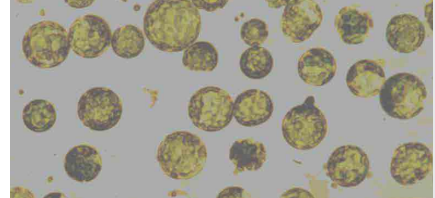
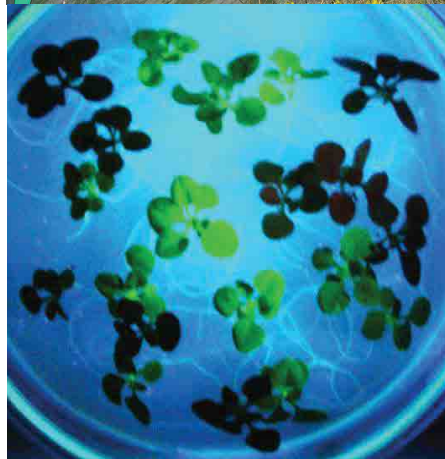
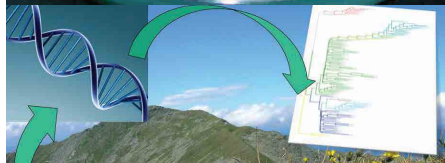
Community ecology, Entomology, Landscape ecology
zoltan.laszlo@ubbcluj.ro

C.S. dr. Pavel Dan TURTUREANU

Alpine ecology, Biodiversity, Climate change
pavel.turtureanu@ubbcluj.ro

Dr. Attila FÜLÖP

Biostatistics, Ornithology, Behavioural ecology
attila.fulop@ubbcluj.ro



CONTACT

Director of the doctoral school:

Prof.dr. PAP Péter László

E-mail: peter.pap@ubbcluj.ro

Web: <https://biogeo.ubbcluj.ro/sdbi/>

Doctoral School in Theoretical and Applied Geology

Doctoral supervisors

Sorin FILIPESCU

Micropaleontology; Stratigraphy; Paleoecology
sorin.filipescu@ubbcluj.ro

Ferenc Lázár FORRAY

*Geochemistry; Stable isotopes; Paleoclimatology;
Environmental Mineralogy; Mine pollution*
ferenc.forray@ubbcluj.ro

Ioan TANȚĂU

*Palynology; Vegetation history; Paleoecology;
Quaternary paleoenvironments reconstruction*
ioan.tantau@ubbcluj.ro

Călin Gabriel TĂMAȘ

*Ore deposits; Ore mineralogy; Generative exploration;
Archaeometry; Mining archaeology*
calin.tamas@ubbcluj.ro

Associated Ph. D. Coordinators

Ioan BUCUR (retired)

Emeritus professor, member of the Romanian Academy
Paleontology; Mesozoic Stratigraphy; Carbonate
Micropaleontology and Sedimentology
ioan.bucur@ubbcluj.ro

Vlad CODREA (retired)

Vertebrate Paleontology; Paleoenvironmental
Reconstruction; Paleoecology; Biochronology;
Biostratigraphy; Paleogeography; Paleoclimate;
Regional geology
vlad.codrea@ubbcluj.ro

Bogdan P. ONAC

Reconstructing sea-level, past climate and
environmental changes using speleothems, ice,
and guano from various cave and karst deposits
bonac@usf.edu / <http://bonac.myweb.usf.edu/BogdanOnac/Home.html>



The training program of the Doctoral Studies in Theoretical and Applied Geology is focused on developing advanced research skills in subjects related to:

- *Analysis of sedimentary basins (Paleontology, Stratigraphy, Paleoecology, Sedimentology);*
- *Mineralogy, petrography and geochemistry of rocks and artefacts.*

Research is carried out in modern laboratories equipped with competitive equipment for material processing, transmitted and reflected light microscopes and stereomicroscopes, X-ray diffractometer and spectrometers for H, C and O isotopes, computers, and reference materials.

Each doctoral thesis represents a research project funded either via independent grants, or as part of larger projects affiliated to the coordinating department under national or international calls. Both Master and doctoral students are members of larger research teams focusing on major geological topics. International collaborations with similar institutions from Austria (Salzburg; Leoben), France (Marseille, Grenoble, Paris), Germany (Tübingen, Erlangen), Poland (Krakow), Slovakia (Bratislava) and USA (Tampa, Florida) offer doctoral students opportunities for training stages abroad, and also theses based on joint supervision.

CONTACT

Director of the doctoral school:

Ioan Tanțău

E-mail: ioan.tantau@ubbcluj.ro

Web: <https://biogeo.ubbcluj.ro/gta/>

Doctoral School in Environmental Science

Doctoral supervisors

Prof. Laurențiu - Călin BACIU

Natural greenhouse gas emissions; Fluid geochemistry
calin.baciu@ubbcluj.ro

Prof. Alida-Iulia GABOR

Optically stimulated luminescence (OSL) and electron paramagnetic resonance (EPR) dating; Environmental radioactivity
alida.timar@ubbcluj.ro

Prof. Alexandru Ozunu

Risk assessment and disaster management; Natural, technological, and NATECH hazards
alexandru.ozunu@ubbcluj.ro

Assoc. Prof. Delia-Maria GLIGOR

Electrochemical sensors / biosensors for environmental pollution control; Chemical pollutants monitoring in water, soil and vegetation
delia.gligor@ubbcluj.ro

Assoc. Prof. Simion-Mihail BELDEAN-GALEA

Assessment of the prevalence and environmental behavior of emerging pollutants by modern and hyphenated chromatographic techniques; Wastewater base epidemiology (WBE)
simion.beldean@ubbcluj.ro

Associated Ph. D. Coordinators

Adjunct Prof. Eugen GURZĂU

The influence of environmental factors on health; Environmental toxicology
eugen.gurzau@ubbcluj.ro
egurzau@ehc.ro

CONTACT

Director of the doctoral school:

Prof. Laurențiu - Călin BACIU

E-mail: calin.baciu@ubbcluj.ro

Web: <https://enviro.ubbcluj.ro/en/specializari/doctoral-level/>

The impact of the the contemporary society on the natural systems have revealed the necessity to rethink the complex relationship between Man and the Environment. Graduates from various fields of science and technology are welcome to this doctoral programme in Environmental Science. Our approach is interdisciplinary and able to accommodate different perspectives, with the ultimate goal of finding solutions to the current environmental challenges.

The programme is research-based and highly personalized for each of the enrolled students. It aims to develop the research skills and creative thinking necessary for successfully addressing the difficult environmental issues we face in the 21st century. The doctoral students will have the opportunity to receive training and apply their initiatives to a broad and exciting research field.



Doctoral School in Geography

Doctoral supervisors

PhD. Professor Habil. Benedek József

Human geography
jozsef.benedek@ubbcluj.ro

PhD. Professor Habil. Croitoru Adina-Eliza

Climatology
adina.croitoru@ubbcluj.ro

PhD. Professor Habil. Dezsi Ștefan

Tourism geography
stefan.dezsi@ubbcluj.ro

PhD. Professor Irimuş Ioan-Aurel

Geomorphology
aurel.irimus@ubbcluj.ro

PhD. Professor Habil. Pop Călin-Cornel

Human geography
calin.pop@ubbcluj.ro

Associate Professor Holobacă Iulian-Horia

Climatology
iulian.holobaca@ubbcluj.ro

Associated Ph. D. Coordinators

PhD. Professor Habil. Cheval Sorin

Climatology
sorin.cheval@meteoromania.ro

PhD. Professor Petrea Dănuț-Petru

Geomorphology
danut.petrea@ubbcluj.ro

PhD. Professor Popescu Rodica-Claudia

Human geography
rodica.popescu@ubbcluj.ro



Doctoral researches are focused on problems that have large socio-economic applicability in physical geography, human geography, regional geography, tourism geography. Doctoral studies are elaborated as solutions to some various geographic space problems generated by climatic and geomorphologic instability, resources limitation and energetic crisis, demographic dynamics, globalization and geopolitical identity crisis, geomorphological restriction in urban and rural space development, the need of comfort and specialized services, etc. The subjects imply large themes of theoretical geography, physical geography (dynamic geomorphology, engineering geomorphology, implemented geomorphology, environment, geoarchaeology, meteorology, hydrology, geoinformatics), territorial development planning, tourism geography, social geography, political geography, medical geography.

The Doctoral School in Geography provides full time doctoral students the possibility to choose among the disciplines available in two doctoral programmes: Physical Geography and Environment and Human and Regional Geography.

The students have the possibility to elaborate joint doctoral degrees with other EU universities professors and they can benefit from scholarships provided by programmes financed by the Romanian Government through its institutions (MEN, UEFISCU, CNCIS etc.), or from European funds.

Romanian or foreign doctoral students have the possibility to elaborate and defend their doctoral thesis in international languages as well.

CONTACT

Director of the doctoral school:

PhD. Professor Habil. Benedek József

E-mail: jozsef.benedek@ubbcluj.ro

Web: <https://geografie.ubbcluj.ro/scoala-doctorala>

Doctoral School “History, Civilization, Culture”

Doctoral supervisors

Constantin BĂRBULESCU

Romanian Ethnology; Romanian nineteenth century history; rural history; peasant bodily representations; human-animal relationship; the history of medicine

constantin.barbulescu@ubbcluj.ro
https://hiphi.ubbcluj.ro/personal/constantin_barbulescu.html

Maria CRĂCIUN

European medieval and early modern history, medieval and early modern history of central Europe, the use of the visual as a historical document and architecture in its relation to heritage, urban space and habitation

maria.craciun@ubbcluj.ro
https://hiphi.ubbcluj.ro/personal/maria_silvia_craciun.html

Adinel-Ciprian DINCĂ

The evolution of medieval archives and libraries; the history of legal mentality in the medieval West; Latin palaeography; the history of Transylvania in the Middle Ages; written communication, education, and the genesis of medieval intellectual life

adinel.dinca@ubbcluj.ro
http://hiphi.ubbcluj.ro/personal/Adinel_Dinca.html
<https://ubbcluj.academia.edu/AdinelDinca>

Aurel-Gelu FLOREA

The Art and Archeology of the Second Iron Age; Prehistoric Religions; The Civilization of Pre-Roman Dacia

aurel.florea@ubbcluj.ro
https://hiphi.ubbcluj.ro/personal/gelu_florea.html

Florin Gheorghe FODOREAN

Archaeology and Ancient History: History and Archaeology of Roman Dacia, Landscape Archaeology during the Roman Period, Ancient Cartography and Geography

florin.fodorean@ubbcluj.ro
https://hiphi.ubbcluj.ro/personal/florin_fodorean.html

Ovidiu Augustin GHITTA

History of the Romanian Greek-Catholic Church, the construction of confessional identities in early modernity, the history of the university of Cluj, cultural history, local history and micro history

ovidiu.ghitta@ubbcluj.ro
https://hiphi.ubbcluj.ro/personal/ovidiu_augustin_ghitta.html

Florin GOGĂLTAN

The metal ages of Romanian prehistory and historical archaeology (late medieval and modern periods)

floringogaltan@gmail.com
<http://arheologie-istoriaartei-cluj.ro/Personal/Curriculum%20vitae%20GOGALTAN.pdf>

Greta-Monica MIRON

Catholic Reform, Greek-Catholic and Orthodox Churches in Eighteenth Century Transylvania, confessional identity, historiography

greta.miron@ubbcluj.ro
https://hiphi.ubbcluj.ro/personal/greta_monica_miron.html

Sorin MITU

Modern History, Historical Imagology and Modern Nationalism

sorin.mitu@ubbcluj.ro
https://hiphi.ubbcluj.ro/personal/sorin_mitu.html

MOLNÁR - KOVÁCS Zsolt

Early and Middle Bronze Age in north-western Romania, on the following topics: chronology, landscape archaeology, habitat models, archaeological and archaeometrical analysis of prehistorical material culture (pottery, metallurgy)

zsolt.molnar@ubbcluj.ro
https://hiphi.ubbcluj.ro/personal/molnar_kovacs_zsolt.html

Eduard-Marius NEMETH

the history of ancient Rome, Roman military history, frontiers of the Roman Empire, archaeology of the Roman provinces

eduard.nemeth@ubbcluj.ro
https://hiphi.ubbcluj.ro/personal/eduard_nemeth.html

Sorin NEMETI

Religions of the Graeco-Roman World, Roman Provincial Art, The Geography of the Ancient World, Roman Archaeology, The Archaeology of Late Antiquity and Migration Period, Methods and Theories of Archaeological Research

sorin.nemeti@ubbcluj.ro
https://hiphi.ubbcluj.ro/personal/sorin_nemeti.html

Mihai Teodor NICOARĂ

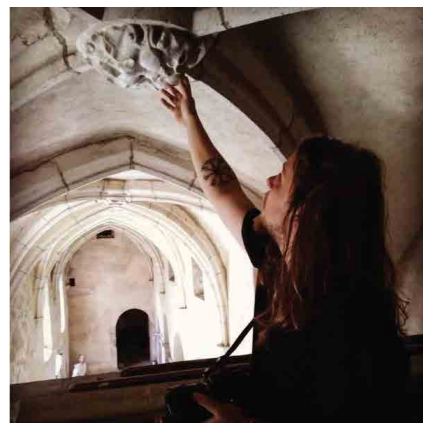
Romanian and Universal Contemporary History, The history of Romanian universities, History of culture and political institutions during the twentieth century, International relations

nicoara.mihai@ubbcluj.ro
https://hiphi.ubbcluj.ro/personal/Miahi_Nicoara.html

PÁL Judit

The history of eighteenth and nineteenth century Transylvania and Hungary, in urban history, social history, history of Armenians, and elite research

pal.judit@ubbcluj.ro
https://hiphi.ubbcluj.ro/personal/pal_judit.html



Doctoral School “History, Civilization, Culture”

Doctoral supervisors

Ioan-Aurel POP, president of the Romanian Academy

Medieval history (with a special focus on cultural, social, and institutional aspects); Latin written culture in the Middle Ages; genealogy

ioan.pop3@ubbcluj.ro

https://hiphi.ubbcluj.ro/personal/ioan_aurel_pop.html

RÜSZ - FOGARASI Enikő

Transylvanian urban history in fifteenth to seventeenth century, social care and almshouse history in sixteenth and seventeenth, varied mechanisms of succession in the case of townsmen of Transylvania in the time of the principality, women in early modern urban history, everyday life, economic history of early modern Transylvania, Foodways in early modern Transylvania, The history of urban schools.

maria.craciun@ubbcluj.ro

https://hiphi.ubbcluj.ro/personal/rusz_fogarasi_eniko.html

Marcela SĂLĂGEAN

Contemporary History; Political Regimes; Foreign Policy Decision Models; Political, economic, cultural and social models and systems in the twentieth and twentyfirst centuries; International Relations

marcela.salagean@ubbcluj.ro

https://hiphi.ubbcluj.ro/personal/marcela_salagean.html

Șerban TURCUȘ

Medieval history, History of Christianity, Documentary sciences of history, History of international relations

serban.turcus@ubbcluj.ro

https://hiphi.ubbcluj.ro/personal/serban_turcus.html



Associated Ph. D. Coordinators

Radu ARDEVAN

History of ancient Greece and Rome, Latin epigraphy, ancient numismatics, social history of Antiquity. Research areas: epigraphy of Roman Dacia, Roman civilization in the Danube provinces, monetary circulation in Roman and post-Roman Dacia, the evolution of research in the field

radu.ardevan@ubbcluj.ro

https://hiphi.ubbcluj.ro/personal/radu_ardevan.html

Mihai BĂRBULESCU, member of the Romanian Academy

History and archaeology of Roman Dacia, ancient spirituality (religion, arts), military history and archaeology, epigraphy

mihai.barbulescu@ubbcluj.ro

https://hiphi.ubbcluj.ro/personal/mihai_barbulescu.html

Simona NICOARĂ

Modern Romanian History; Historical Anthropology; The History of Collective Mentalities and Social Imaginary; Cultural History

toader.nicoara@ubbcluj.ro

Toader NICOARĂ

Modern Romanian History; Historical Anthropology; The History of Collective Mentalities and Social Imaginary; Cultural History

toader.nicoara@ubbcluj.ro

Coriolan - Horațiu OPREAN

Roman history and archaeology, beginning of the Migration period; Roman Dacia; Roman military history; relations of Dacia with the Barbarian world; Roman forts; Roman urban archaeology; landscape archaeology; non-destructive survey methods (geophysics, LiDAR); Roman frontiers (limes); Roman architecture; Przeworsk culture; Sântana de Mureș-Cernjachov culture; social and political structures in the fourth to sixth centuries AD; barbarian princely graves and hoards in the fourth to sixth centuries AD

choprean@yahoo.com

<http://arheologie-istoriaartei-cluj.ro/Personal/Curriculum%20vitae%20OPREAN%20docx.pdf>

Doru RADOSAV

Cultural history, oral and recent history, religious and interconfessional history, the history of the book in the modern age, the history of Romanian historiography

doru.radosav@buccluj.ro

https://hiphi.ubbcluj.ro/personal/doru_radosav.html

SIPOS Gábor

the history of the Hungarian people, the history of libraries, ecclesiastical history

gsipos13@gmail.com

CONTACT

Director of the doctoral school:

Maria Crăciun

E-mail: maria.craciun@ubbcluj.ro

Web: http://hiphi.ubbcluj.ro/SD_ICC/

The Doctoral School of Population Studies and the History of Minorities

Doctoral supervisors

Prof. Ioan BOLOVAN PhD

- Culture and national identities in the 19th and 20th Centuries
- The History of the Population in Modern and Contemporary times
- War and society in the XVIII-XXI centuries
- Continuities and discontinuities in history: revolutions and reforms in the XVIII-XXI Centuries

ioan.bolovan@ubbcluj.ro

Prof. Rudolf GRÄF PhD

- History of the Germans in Romania
- History of the Habsburg Empire
- Economic History of Transylvania and Banat
- History of Central and Southeastern Europe

rudolf.graf@ubbcluj.ro

Associate professor Ion CÂRJĂ PhD

- The Modern History of Romania
- The history of Transylvania in Modern and Contemporary Eras
- Confessional identities and Church history
- Romanian-Italian cultural and political-diplomatic relations

ion.carja@ubbcluj.ro

Associate professor Ana Victoria SIMA PhD

- Modern and Contemporary history
- Church history
- History of education
- Cultural Anthropology

ana.sima@ubbcluj.ro

Associate professor Alina BRANDA PhD

- Anthropology of Southeast Europe
- Cultural identities in Europe
- Cultural heritage
- Migration

alina.branda@ubbcluj.ro

Associate professor Tóth SZILÁRD PhD

- The history of Romania in the interwar period
- The problem of Minorities in the interwar period
- The Cold War
- International relations in sec. XX
- History teaching
- Economic history

szilard.toth@ubbcluj.ro

Associate professor HUNYADI Attila GáborD

Contemporary History. Contemporary Economic History

attila.hunyadi@ubbcluj.ro

Associated Ph. D. Coordinators

Researcher Tudor SĂLĂGEAN PhD

- Medieval History of Romania
- History of Medieval and Premodern Transylvania
- Cultural heritage

tudor.salagean@ubbcluj.ro

Researcher Luminița DUMĂNESCU PhD

- Family and childhood history, 19th-20th centuries
- History of the population of Transylvania, XIX-XX centuries
- Minorities and mixed marriages
- Demographic policies

luminita.dumanescu@ubbcluj.ro

Researcher Marius EPPPEL PhD

- Modern and Contemporary history
- Family history
- Ecclesiastical history
- Cultural anthropology

marius.eppel@ubbcluj.ro



The Doctoral School of Population Studies and History of Minorities was organized in collaboration with the Center for Population Studies at the Faculty of History and Philosophy, following a desire to strengthen and develop the field of population research with the help of modern research methodologies. In Romania, there is currently no other doctoral school devoted exclusively to population studies. The doctoral theses that addressed issues in this field have focused primarily on a specific perspective— historical, sociological, demographic, economic or population geography, without in-depth research at a pluri- and multidisciplinary level that would respond to current sociological challenges.

The common objectives of the activities conducted by the Center for Population Studies, the German Institute, the Seminar of Historical Demography, the Institute of Ecclesiastical History, benefiting from specific infrastructure, equipment and logistics, coalesce with those of the Doctoral School of Population Studies and the History of Minorities:

1. Provide the most appropriate support for PhD students
2. Develop a program of excellence, to become, in time, the standard research in this area and come up with solutions to current demographic problems
3. The transfer of knowledge to society
4. Closer links with national and international research networks

The research program the doctoral school follows is based on recognizing the role of the research mechanisms behind the problems that contemporary society faces, ranging from a dramatic fall in fertility, population aging, migration for work to waves of migration which stormed Europe lately.



CONTACT

Director of the doctoral school:

Lecturer Ion Cârja PhD

E-mail: ion.carja@ubbcluj.ro

Web: <https://studiipopulatie.hiphi.ubbcluj.ro/about>

Doctoral School in Philosophy

Doctoral supervisors

Prof. dr. Alexander BAUMGARTEN

Latin Medieval Philosophy
alexander.baumgarten@ubbcluj.ro

Associate Professor dr. Márton Attila DEMETER

Political Philosophy, The Problem of National Minorities, Theories of Nationalism, Multiculturalism, Republicanism
marton.demeter@ubbcluj.ro

Prof. dr. Mihaela-Cornelia FRUNZĂ

Ethics, Applied Ethics, Gender Studies, P4C
mihaela.frunza@ubbcluj.ro

Prof. dr. Ion COPOERU

Approaches of Normativity: Political Philosophy, Philosophy of Law, Applied Ethics
ion.copoeru@ubbcluj.ro

Prof. dr. Dan Eugen RAȚIU

Aesthetics, Philosophy of Art, Philosophy of Culture, Analysis of Cultural Practices and Policies
dan.ratiu@ubbcluj.ro

Associate Professor dr. Ciprian MIHALI

Contemporary philosophy, social philosophy and civic education, racism, colonialism, decolonialism, theories of modernity and postmodernity, theories of space and habitation
ciprian.mihali@ubbcluj.ro

Assistant Professor dr. Alina NOVEANU

Contemporary philosophy, hermeneutics, history of philosophy, classical and contemporary German philosophy
alina.noveanu@ubbcluj.ro

Associated Ph. D. Coordinators

Scientific Researcher I dr. Monica BRÎNZEI

Latin Philosophy and Theology in 14th-15th Centuries
monica.brinzei@ubbcluj.ro

Professor emeritus dr. Virgil CIOMOȘ

Transcendental Philosophy; Contemporary Phenomenology – their application in Psychoanalysis
virgil.ciomos@ubbcluj.ro

Professor emeritus dr. Rodica Marta VARTIC

Interdisciplinary Study of Romanian Philosophy focussing both on the connections with the historical evolution of the Romanian culture and on the movement of ideas in Europe
rodica.vartic@ubbcluj.ro

Professor emeritus dr. Carol VERESS

Semiological and Hermeneutical Problems of Knowledge, Communication and Culture; Investigations of Applied Philosophy
carol.veress@ubbcluj.ro

CONTACT

Director of the doctoral school:

Prof. dr. Mihaela-Cornelia FRUNZĂ

E-mail: mihaela.frunza@ubbcluj.ro

Web: <http://hiphi.ubbcluj.ro/doctorat/Filosofie.html>



Training of doctoral students in the Doctoral School in Philosophy is done in accordance with the research undertaken in the following main directions: phenomenology, semiology, hermeneutics, ethics, aesthetics, political philosophy, philosophy of culture and communication, history of philosophy, Romanian philosophy, Hungarian philosophy, interdisciplinary, transdisciplinary and applied research. Doctoral studies are conducted in Romanian, Hungarian, or in an international foreign language. Members of the Doctoral School in Philosophy are involved in numerous research projects, attend conferences, symposia, workshops, annual scientific sessions of doctoral students in joint programmes with other research institutions and doctoral schools at home and abroad, and their results are presented in numerous scientific publications issued by scientific journals and accredited publishers with BDI indexation. The Doctoral School in Philosophy collaborates with the Center for Ancient and Medieval Philosophy, and the Center for Applied Philosophy, providing the necessary information resources and facilities for research and guidance.

Doctoral School International Relations and Security Studies



International Relations and European Studies

Doctoral supervisors

Professor Dr. IVAN Adrian-Liviu

European governance, theories of integration and security studies in the XX-XXI centuries; Security policies and strategies; Minorities and national security

adrian.ivan@ubbcluj.ro

Professor Dr. HORGĂ Ioan

Identity, intercultural dialogue, European borders; Regionalization and differentiated integration

ioan.horga@ubbcluj.ro

Professor Dr. NAGY Rozsa Erzsebet

Arms Control and Disarmament of Weapons of Mass Destruction; The political and social processes of the Middle East

nrozsza.erzsebet@gmail.com

Lecturer Dr. CROITOR Mihai

History of the Cold War; History of international relations, Sino-Romanian, Sino-Soviet, Romanian-Yugoslav political-diplomatic relations

mihai.croitor@ubbcluj.ro

Professor Dr. ROȘCA Luminița

Media and Communication in a European context; Media perspective on international events

luminita.rosca@ubbcluj.ro

Associate Professor II Dr. GHERGHINA Sergiu

Attitudes and political participation in the European Union; Democracy and democratization in contemporary Europe; Political representation: citizens, leaders, institutions

sergiu.gherghina@ubbcluj.ro

Associate Professor Dr. PETRESCU-MAG

Ruxandra-Mălina

Environmental sociology with focus on land governance, climate change, consumer behavior, and food waste

malina.petrescu@ubbcluj.ro

Associated Ph. D. Coordinators

Professor Dr. BUCUR Ioan-Marius

Religion in international relations; Religious policies of communist regimes; Metamorphoses of contemporary terrorism

marius.bucur@ubbcluj.ro

Professor Dr. ȚĂRĂU Virgiliu

Contemporary History, Security policies after the Cold War, Political-diplomatic semantics

virgiliu.tarau@ubbcluj.ro

Associate Professor II. Dr. GURZĂU Anca

Environmental Security and Health

anca.gurzau@ubbcluj.ro

Lecturer Dr. IOV Claudia

Geopolitics of ethnic and national minorities; Governance and security in the EU; Migration and (in)security; Protocol and international diplomacy; Societal security: identity and alterity

claudia.iov@ubbcluj.ro

Lecturer Dr. MARIAN Claudiu

Electoral systems; Political marketing; Electoral sociology; Political communication

claudiu.marian@ubbcluj.ro

Lecturer Dr. ALEXANDRESCU Mihai

Contemporary History of Romania; International relations; European Studies; The decision-making process of the EU

ioan.alexandrescu@ubbcluj.ro

Lecturer Dr. LAZĂR Marius

International Relations; Middle East, European Neighborhood Policy

marius.lazar@ubbcluj.ro

Lecturer Dr. STAN Adrian-Daniel

European and international security governance; Security policies and strategies; European Union governance and policies; Lobby and advocacy in the European Union

adrian.stan@ubbcluj.ro

Lecturer Dr. DUNA Dacian

Contemporary International Relations; Security Studies; Theories of international relations; European integration

dacian.duna@ubbcluj.ro

10. Lecturer Dr. Manciu Ioan, Security and Strategic

Studies; NATO and international security management; European and transatlantic security

ioan.manciu@ubbcluj.ro

Professor Dr. FRUNZETTI Teodor

Security studies; Security strategies and policies

tfrunzetti@gmail.com

Professor Dr. LUȚĂȘ Mihaela

European economic policies

mihaela.lutas@ubbcluj.ro

Associate Professor Dr. TOTH Szilárd

History of Romania in the interwar period; The problem of minorities in the interwar period; The cold war; International relations in XXth century; Didactics of history; Economic history

szilard.toth@ubbcluj.ro

Lecturer Dr. Lonhard TAMAS

History and Contemporary Theories of International Relations; National minorities in Central and Eastern Europe; The establishment of communist regimes in Central and Eastern Europe; European integration; Geopolitics and geostrategy

tamas.lonhart@ubbcluj.ro

Professor Dr. Valentin NAUMESCU

Our program brings together a group of highly prepared professionals, well known specialists in international relations, European studies, history, sociology. The PHD program of International Relations and European Studies and History has adopted multiculturalism as main development direction. The program's goal is to provide students with a strong foundation in theory and practice of international relations, philosophy, history and sociology that are necessary in order to conduct groundbreaking research. The PHD program is designed to facilitate and strengthen the development of experienced graduates and professionals by expanding their knowledge and enabling them to make key leadership contributions to their competency fields.

Doctoral School International Relations and Security Studies

History

Doctoral supervisors

Associate Professor Dr. GĂZDAC Cristian

Threats to international security – cultural terrorism and illicit antiquities trafficking; Preventing and combating acts of destruction of cultural heritage by applying and capitalizing on the international legislative framework; Conservation and protection of cultural heritage against acts of destruction and illegal trafficking as a way of financing terrorism

cristian.gazdac@ubbcluj.ro

Associate Professor I Dr. KOVACS-NASTASĂ Lucian

Intellectuals from pre-war and inter-war Romania; Universities in pre-war and inter-war Romania; Elites from Romania and their evolution in the 20th century; Intellectuals, elites and culture in the decades of the communist regime

lucian.nastasa@ubbcluj.ro

Associate Professor II Dr. Hab. GLIGOR Mihaela

Romanian philosophy; Philosophy of culture; Interwar history; Jewish intellectuals; Holocaust memory studies; Indian studies

mihaela.gligor@ubbcluj.ro

Associated Ph. D. Coordinators

Professor Dr. GHITTA Ovidiu Augustin

Medieval and postmodern history; Church history; Romanian-Cyrillic Paleography

ovidiu.ghitta@ubbcluj.ro

Professor Dr. BĂRBULESCU Constantin

Modern History of Romania; Imaginary of the human body; Modernization of the rural world

constantin.barbulescu@ubbcluj.ro

Lecturer PINTILESCU Corneliu

History

pintilescu2002@yahoo.com

Professor Dr. BOLOVAN Ioan

The modern history of Transylvania and the history of the population of Romania in the 19th-20th century

ioan.bolovan@ubbcluj.ro

Associate Professor Dr. TOTH Szilárd

History of Romania in the interwar period; The problem of minorities in the interwar period; The cold war; International relations in the XXth century; Didactics of history; Economic history

szilard.toth@ubbcluj.ro

Lecturer Dr. Lonhard TAMAS

History and Contemporary Theories of International Relations; National minorities in Central and Eastern Europe; The establishment of communist regimes in Central and Eastern Europe; European integration; Geopolitics and geostrategy

tamas.lonhart@ubbcluj.ro

Professor. Dr. CIPĂIANU Gheorghe

Contemporary history; History of communism, Theories of international relations

gheorghe.cipaiuanu@ubbcluj.ro

Philosophy

Doctoral supervisors

Professor Dr. ZĂPĂRȚAN Liviu Petru

Philosophy of the European Union

liviuzapartan@yahoo.com

Sociology

Doctoral supervisors

Associate Professor Dr. hab. Valentina PRICOPIE

The communication policy of the European Union; Hypostases of European public diplomacy; Emerging paradigms of European journalism; The media dimension of contemporary conflicts; The role of public communication in the construction of security strategies

valentina.pricopie@ubbcluj.ro

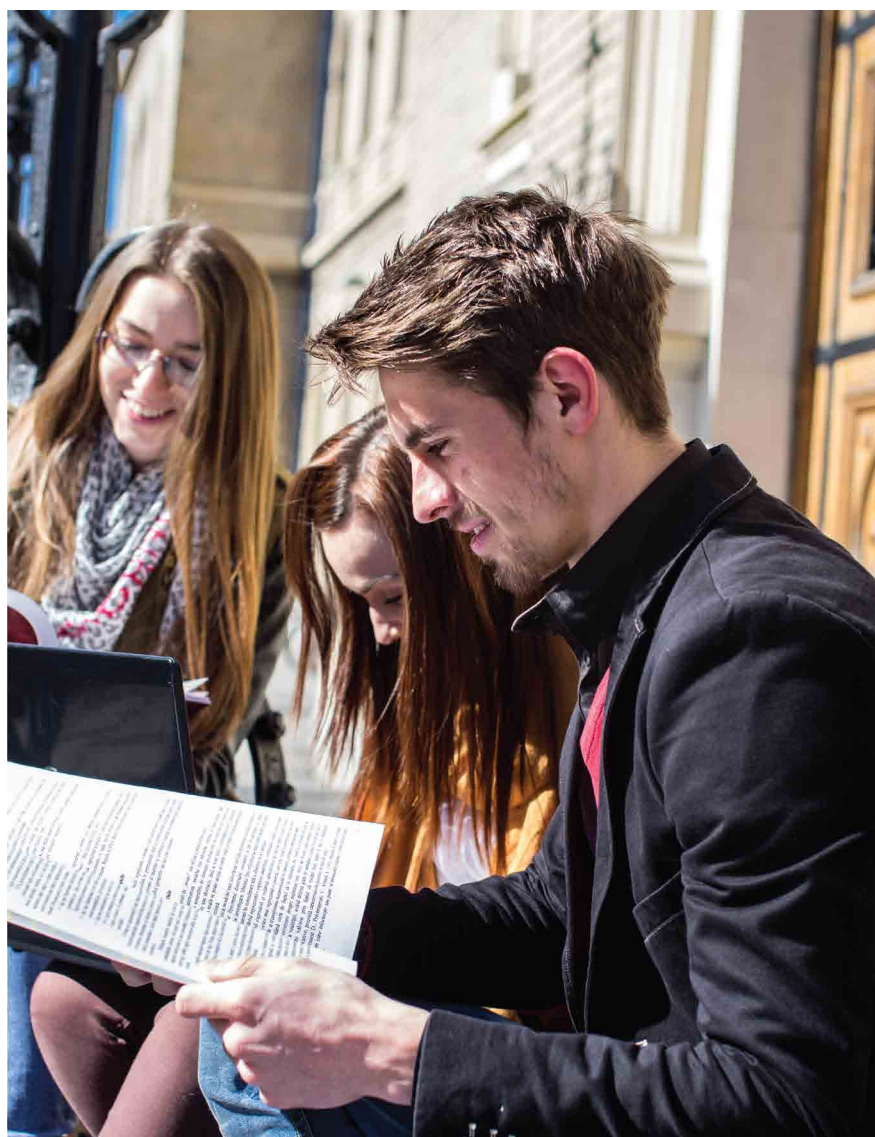
CONTACT

Director of the doctoral school:

Associate Professor Dr. Găzdac Cristian Anton

E-mail: cristian.gazdac@ubbcluj.ro

Web: <http://hiphi.ubbcluj.ro/doctorat/RISS.html>



Doctoral School “International Relations and European Studies/European Paradigm”

International Relation and European Studies Doctoral supervisors

Prof. Dr. Melania Gabriela CIOT

Decision-making, idiosyncrasies, international and European negotiations, cultural diplomacy
melania.ciot@ubbcluj.ro

Prof. dr. Valentin NAUMESCU

International relations and European studies; Foreign policy and diplomacy; Global and regional security; Strategic policies, great powers, balance of power; Transatlantic relations; Eastern Neighborhood of the European Union

valentin.naumescu@ubbcluj.ro

Associated Ph. D. Coordinators

Prof. Dr. Mircea BRIE

International relations and European studies; European borders. Border space in international relations; The process of European integration; European Union institutions and policies; European borders. Border space in international relations; European, national, regional and local identity; Issues of national minorities and social security
mirceabrie@gmail.com

Political Science Doctoral supervisors

Prof. Dr. Sergiu MIȘCOIU

Political science; Theories of international relations; Theories of political ideologies; Populism, extremism, radicalism, nationalism; Dynamics of contemporary political systems; Discourse theories with applications in political science
sergiu.miscoiu@ubbcluj.ro

History Doctoral supervisors

Prof.dr. Ovidiu PECICAN

European history, European Union history, cultural anthropology.

pecolino999@yahoo.com

Sociology Doctoral supervisors

Prof. Dr. Eniko VINCZE

Sociology (socio-cultural anthropology, gender studies, Romani studies); Anthropology of human rights; Social exclusion, discrimination, racism; Gender, nation, nationalism; Socio-economic condition of ethnic Roma in Europe and policies for Roma; Gender inequalities, feminism and gender policies in the EU; Social segregation and urban order
eniko.vincze@ubbcluj.ro

CONTACT

Director of the doctoral school:

prof. Melania-Gabriela Ciot

E-mail: melania.ciot@ubbcluj.ro

Web: <https://sites.euro.ubbcluj.ro/paradigmaeuropeana/en/>



Doctoral School “International Relations and European Studies/European Paradigm”, belonging to the Faculty of European Studies, has a double potential which gives its distinctive character within the context of doctoral schools at UBB: (1) by supervising doctorates in traditional domains it also promotes the multidisciplinary nature of approaches employed in research; (2) in addition to the scientific production of quality, the team of this school and practices in various forms the implication of academics in the public life.

To ensure administrative and professional conditions that can produce high quality doctoral theses, the team of the Doctoral School “International Relations and European Studies/European Paradigm” seeks collaboration with other doctoral schools of UBB.

Beyond UBB, we promote and collaborate with academic institutions in the country and abroad as well as with organizations of the local, national and international civil societies. In addition to the development on solid theoretical bases, we aim, through applied approaches, to contribute to the social responsabilization of knowledge.

Doctoral School of Sociology

Doctoral supervisors

Professor PhD ALBERT-LŐRINCZ Enikő
(joint supervision)

The problem of drugs from a social perspective; Health and illness in a social context; Education and the specific problems of schools; Social and school adjustment

eniko.albert@ubbcluj.ro

Professor PhD Habil. CHIRIBUCĂ Dan

Sociology of communication and mass media; The social impact of information and communication technology

dan.chiribuca@ubbcluj.ro

Professor PhD Habil. COMȘA Mircea

Family Demography; Life Course Research; Relations between generations and gender relations; Social paths and trajectories: family and residence, education and work, crime and recidivism

cornelia.muresan@ubbcluj.ro

Professor PhD Habil. CULIC Irina

Sociology of the state; International migration; Citizenship Studies; Comparative political sociology; Nationalism and ethnicity; Epistemological and methodological foundations of social research; Historical sociology

irina.culic@ubbcluj.ro

Professor Emeritus PhD ROTH Maria

(joint supervision)

Marginalized groups and discrimination, with an emphasis on research in the field of sociology of childhood and youth; Children's education and health; Violence and society

maria.roth@ubbcluj.ro

Professor PhD Habil. MUREȘAN Cornelia

(joint supervision)

Family Demography; Life Course Research; Relations between generations and gender relations; Social paths and trajectories: family and residence, education and work, crime and recidivism

cornelia.muresan@ubbcluj.ro

Professor PhD Habil. DÉGI László Csaba

Health and illness in social contexts; Psychosocial care in oncology; Survivorship and quality of life in cancer; Cancer and work; Substance use disorder: prevention and intervention

laszlo.degi@ubbcluj.ro

Professor PhD Habil. VERES Valér

Population, social structure and identity

veres.valer@ubbcluj.ro

Associate Professor PhD Habil. IOVU Mihai-Bogdan

Child abuse and neglect; Children's rights; Educational policies for higher education

mihai.iovu@ubbcluj.ro

Professor PhD Habil. PANTEA Maria-Carmen

Youth Studies; Sociology of work and employment

maria.pantea@ubbcluj.ro

CONTACT

Director of the doctoral school:

Professor PhD Habil. DÉGI László Csaba

E-mail: laszlo.degi@ubbcluj.ro

Secretary of the doctoral school:

PhD Savu Veronica

E-mail: veronica.savu@ubbcluj.ro

Web: <https://socasis.ubbcluj.ro/en/doctoral-school-of-sociology/>

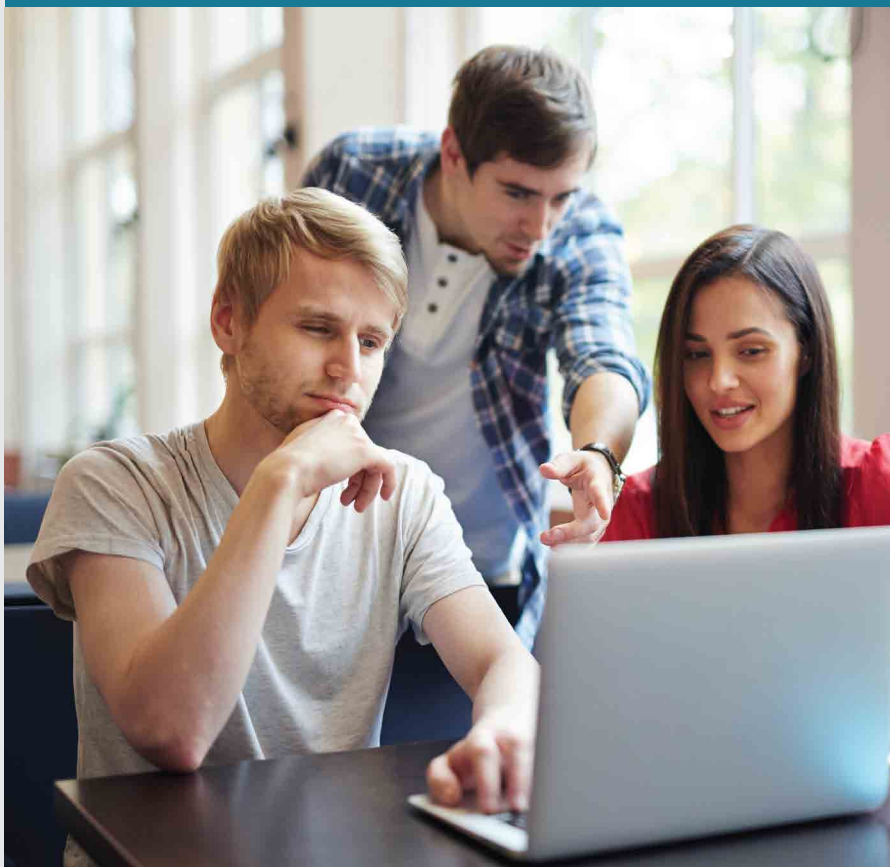


The members of the school conduct research on social phenomena and problems, demography, social mobility, public policy, evaluation of social services and of social intervention programmes, psycho-sociology of health and other branches of sociology.

The mission of the Doctoral School in Sociology is to develop competent human resource in carrying out scientific research and innovation. It aims at:

- *Acquiring advanced theories, methods and techniques of scientific research in social sciences and competence regarding the management of social research projects;*
- *Developing scientific thinking in order to identify, formulate and solve research problems, issues regarding the ethics of research within social sciences, and also for the formation of ethical attitudes in scientific research;*
- *Developing skills regarding documentation, elaboration and capitalization of scientific works;*
- *Acquiring communication skills in the academic areas through the use of international languages in oral communication and the writing of scientific papers.*

The Doctoral School brings together professors from sociology and social work and thus offering a wide range of competences and interests.



Doctoral School “Evidence-Based Assessment and Psychological Interventions”

Doctoral supervisors

Professor DAVID Daniel, Ph.D.

Clinical cognitive neuroscience; research methods; evidence-based psychological interventions
daniel.david@ubbcluj.ro
<https://clinicalpsychology.psiedu.ubbcluj.ro/prezentare/membri-si-colaboratori/membri-colaboratori-academic/daniel-david/>

Professor DAVID Oana, Ph.D.

Technology-based psychological interventions; parental interventions
oanadavid@psychology.ro
<https://clinicalpsychology.psiedu.ubbcluj.ro/prezentare/membri-si-colaboratori/membri-colaboratori-academic/oana-david/>

Professor DOBREAN Anca, Ph.D.

Clinical assessment and evidence-based psychological interventions for mental disorders in children and adolescents; technology and psychotherapy for children and adolescents
ancadobrean@psychology.ro
<https://clinicalpsychology.psiedu.ubbcluj.ro/prezentare/membri-si-colaboratori/membri-colaboratori-academic/anca-dobrean/>

Professor SZENTÁGOTAI-TÁTOR Aurora, Ph.D.

Evidence-based psychological interventions; emotion regulation and psychopathology; loneliness and psychopathology; happiness and wellbeing
auraszentagotai@psychology.ro
<https://clinicalpsychology.psiedu.ubbcluj.ro/prezentare/membri-si-colaboratori/membri-colaboratori-academic/aurora-szentagotai/>

Professor SZAMOSKÖZI Ștefan, Ph.D.

Psychological assessment; history of Psychology
istvan.szamoskozi@ubbcluj.ro

Collaborators:

Professor Pim CUIJPERS, PhD

Prevention of mental disorders; psychological treatments of depression and anxiety disorders; internet-delivered treatments; randomised clinical trials; meta-analysis
<https://www.pimcuijpers.com/blog/>

The Doctoral School - Evidence-based psychological assessment and psychological interventions represents the graduate programme (doctoral/postdoctoral) of both the Department of Clinical Psychology and Psychotherapy and the Department of Applied Educational Psychology of the Babeș-Bolyai University. The doctoral school is based on the “clinical science” and “scientist practitioner” paradigms, and promotes personalized evidence-based psychological interventions, thus providing a useful set of skills for both professional insertion on the work market and outstanding academic and research activity. The themes generally subscribe to the field of psychological assessment, clinical psychology, psychopathology, psychotherapy and psychological counselling, cognitive sciences, cognitive-behavioral coaching and positive psychology, genetic counselling, and evolutionary psychology. The research infrastructure is integrated within the International Institute for the Advanced Studies of Psychotherapy and Applied Mental Health (International Institute for Psychotherapy, an excellence research unit of European relevance, included in the MERIL platform), an academic spin-off of the Department of Clinical Psychology and Psychotherapy. Alumni can continue studying in post-doctoral programmes both in Romania and abroad, and/or can enter the labour market both in Romania and abroad, the doctoral school being a world-class institution, joining prestigious international-level academic networks.



CONTACT

Director of the doctoral school:

Prof. Szentágotai-Tător Aurora, Ph.D.

E-mail: auraszentagotai@psychology.ro

Web: <https://clinicalpsychology.psiedu.ubbcluj.ro/en/home/>

Doctoral School in Applied Cognitive Psychology

Doctoral supervisors

Professor Oana BENGĂ, Ph.D.

Cognitive and emotional self-regulation in early childhood: internal (temperament, attentional processing) and external (parenting, parental self-regulation, socialization of emotions) mechanisms; Individual differences and early predictors of psychopathology; Neural correlates of atypical development

oanabenga@psychology.ro

<http://psychology.psiedu.ubbcluj.ro/en/despre-noi/membri/cadre-didactice>

Professor Adriana BĂBAN, Ph.D.

Health behaviours, abuse and trauma, vaccination, screening, reproductive health, quality of care and patient's satisfaction

adrianababan@psychology.ro

<http://psychology.psiedu.ubbcluj.ro/en/despre-noi/membri/cadre-didactice/12-professors/5-prof-univ-dr-adriana-baban>

Professor Petru CURȘEU, Ph.D.

• *Dynamics and performance of small social groups – especially aspects of conflict and collaboration as precursors to performance*

• *Collective decisions – especially the factors that influence the emergence of collective rationality*

• *Dynamic elements of social cognition - in particular, stereotypes and social discrimination in organizational context and in communities*

petrucurseu@psychology.ro

<https://docs.google.com/document/d/0Bzswdr6cSo4eDQxUE8yZmh5cUFITeXlU2UwWTBkdGh4bUcw/edit?resourcekey=0-wdr9CsanrxJWpNnUtRZuQ>

Professor Mircea Miclea, Ph.D.

• *Applied research in e-mental health solutions, educational software and computerized psychological evaluation*

• *Fundamental research in anxiety and cognition*

mirceamiclea@psychology.ro

<http://psychology.psiedu.ubbcluj.ro/en/despre-noi/membri/cadre-didactice>

Professor Andrei C. MIU, Ph.D.

• *Individual differences in emotion and emotion regulation and vulnerability to psychopathology*

• *Stress and psychopathology: Psychological and biological mechanisms*

• *Emotion-cognition Interactions*

• *Emotions and emotion regulation: psychological and biological mechanisms*

• *Aesthetic emotions*

andreimiu@psychology.ro

<https://docs.google.com/document/d/0Bzswdr6cSo4d1pNQVnZzhqFdCQXJHqZyRVpsWVpOYNr/edit?resourcekey=0w8wdOKeBxfnKsETnXvqhYQ>

Professor Adrian OPRE, Ph.D.

• *The cognitive unconscious (implicit perception, implicit learning, implicit memory)*

• *Development of social and emotional skills in children and adolescents*

• *Identity (personal and educational)*

• *Psychological counseling and religious coping*

adrianopre@psychology.ro

<https://docs.google.com/document/d/0Bzswdr6cSo4c1h3NVNcY1NLSkwzY1h0VGVP53BhSmFxaW44/edit?resourcekey=0wX3Qgt1mLozbEMaFMJT-xQ>



The Doctoral School "Applied Cognitive Psychology" is centered on the development of advanced research programmes in cognitive psychology applied in health, education and work. The main objectives of the doctoral school reside in improving the theoretical and empirical knowledge, in the national and international dissemination of the results, and in ensuring that the practice of psychology is evidence-based. For the doctoral students we provide a high-quality environment for their development, theoretical education and integration in the general theme of scientific research of their doctoral supervisor. The doctoral students and their supervisors are involved in projects and activities of high scientific and applied relevance (for example FP7, CNCS, interdisciplinary groups and international networks of study in collaboration).

The doctoral research themes are mainly focused on the primary domains: health, vulnerability and risk, respectively intervention, prevention and development, approached through the perspective of cognitive sciences. The transfer of knowledge and research abilities is ensured by the courses, conferences, workshops, individual meetings or debates in the groups of interests.

Professor Laura VISU-PETRA, Ph.D.

• *The typical and atypical development of executive functions, relevant for developing training programs and for improving academic performance and reducing risk behaviors.*

• *Her current research interests target emotion-cognition interactions in high-anxious children (from early preschoolers until adolescence, with a focus on working memory and cognitive-affective flexibility).*

• *Another current research interest relates to the emergence and development of deceptive behavior across the lifespan in relation to socio-cognitive (theory of mind, executive functions), dark personality and problematic behavior*

laurapetra@psychology.ro

<http://psychology.psiedu.ubbcluj.ro/en/despre-noi/membri/cadre-didactice>
Homepage: Riddle Lab <https://riddlelab.ro/>

Assoc. Professor Oana NEGRU-SUBȚIRICĂ, Ph.D.

Identity development, Goal structures and processes in human self-regulation, Motivation and performance, Emerging adulthood, Developmental approaches to career interventions

oananegru@psychology.ro

<http://psychology.psiedu.ubbcluj.ro/en/despre-noi/membri/cadre-didactice/13-associate-professors/46-oana-negru-subtirica>

CONTACT

Director of the doctoral school:

Professor Andrei C. MIU, Ph.D.

E-mail: andreimiu@psychology.ro

Web: <http://psychology.psiedu.ubbcluj.ro/en/teaching/doctoral-school/description>

Doctoral School “Education, Reflection, Development”

Doctoral supervisors

Professor ALBULESCU Ion, Ph.D.

Educational Alternatives, Comparative Pedagogy, Pedagogical Doctrines, Didactics, Initial Education and Continuing Training of Teachers
ion.albulescu@ubbcluj.ro

Professor Bocoș MUȘATA-DACIA, Ph.D.

The Theory, Methodology and Management of Training; Theory, Methodology and Management of Curriculum; Interactive Pedagogy; Didactics of Educational Sciences; Initial and Continuous Training for Teachers
musata.bocos@ubbcluj.ro

Professor CHIȘ Vasile, Ph.D.

Fundaments of Pedagogy, The Theory and Methodology of Instruction, The Theory of Evaluation, Research Methodology in Education, Computer-assisted instruction
vasile.chis@ubbcluj.ro

Professor STAN Nicolae-Cristian, Ph.D.

Didactic evaluation, educational theory, didactic communication, conflict and crisis management and reform and change in education
mirceamiclea@psychology.ro
<http://psychology.psiedu.ubbcluj.ro/en/despre-noi/membri/cadre-didactice>

Associate Professor (Conf.) Catalano Horațiu, Ph.D.

Early Years Education; Personalized Intervention in Learning Difficulties; Professional Development and Management of the Teaching Career; The Theory and Methodology of Instruction; Educational Alternatives
catalano.horatiu@ubbcluj.ro

Associated Ph.D. Coordinators

Professor Roman Alina-Felicia, Ph.D.

(Universitatea „Aurel Vlaicu” din Arad)

Evaluation of learning process; Current approaches in education and the development of students' wellbeing; Integrated learning; Curricular design for early education; Initial and continuous professional training of teachers; Outdoor education
alina.roman@ubbcluj.ro

Professor Rusu Alina-Simona, Ph.D.

(Universitatea de Științe Agricole și Medicină Veterinară din Cluj-Napoca)

The scientific study of the applied therapeutic and educational values of human-animal interactions, evolutionary interpretation of human behavior and educational models of volunteering and Service Learning in higher education
alina.rusu@ubbcluj.ro



The objectives of the “Education, Reflection, Development” Doctoral School are set according to the priorities regarding the doctoral programmes in Romania and abroad, in the domain of Education Sciences, as follows:

- Providing guidance for the doctoral students and tenured staff of the doctoral school towards priority themes on contemporary world issues: change, vulnerability, crisis, learning, adaptation, motivation, recovery, rehabilitation, etc.
- Focusing the doctoral theses on field research (research-action type projects) but also on the development of fundamental and applied research topics in the field of new pedagogies, such as: contemporary educational systems, management, curriculum, teaching, learning, partnerships, special educational needs, access to education, etc.
- Encouraging doctoral students and the supervising teachers to develop new educational technologies, new educational supporting technologies in schools, in society as a whole, focusing on Advanced Distributed Learning (ADL);
- Representing with priority in the doctoral thesis the special pedagogical confrontations during kindergarten and school: emotional disturbances, aggression, violence, attention deficit, hyperactivity, equality, social exclusion, etc.
- Enhancing interactivity during doctoral school and supporting research projects, scientific paper presentations during the research stage and the thesis defence;
- Including doctoral students with relevant results in the postdoctoral programmes of the faculty;
- Enhancing the experimental character of the doctoral school, of the interdisciplinary, development of a doctoral environment characterized by interactivity.



CONTACT

Director of the doctoral school:

Professor Stan Nicolae-Cristian, Ph.D.

E-mail: cristian.stan@ubbcluj.ro

Web: <https://dse.psiedu.ubbcluj.ro/doctorat-stiinte-ale-educatiei#>

Doctoral School “Didactics. Tradition, Development, Innovation”

Doctoral supervisors

Professor CIASCAI Liliana, Ph.D.

Didactics of Sciences; Science Pedagogical Content Knowledge (S-PCK); STEM / STEAM / STREAM Education; Integrated Curriculum; Technological and Engineering Education; Inquiry-Based Learning; Metacognition and SRL; Creativity and Innovation in Education; Initial and continuous professional training of teachers

liliana.ciascai@ubbcluj.ro

Professor ZSOLDOS-MARCHIȘ Iuliana-Hortensia, Ph.D.

Didactics of Mathematics; Game-Based Learning; Gamification; Self-regulated learning; STEM / STEAM / STREAM approaches in primary schools

iuliana.marchis@ubbcluj.ro

Professor Eliza-Maria DULAMĂ

Geography curriculum at pre-university and university level; Education for the environment, sustainable development and territorial identity; Acquiring skills and assessing their level of development; E-learning in the teaching of Geography; Didactics of Geography and natural sciences; Initial and continuing teacher training

maria.dulama@ubbcluj.ro

Associated Ph.D. Coordinators

Professor OPRIȘ Dorin Corneliu, Ph.D.

Didactic models in moral education; Religious education didactics; Computer-based assessment; Migration and contemporary education; Mobile learning in University education

dorin.opris@ubbcluj.ro

The "Didactics. Tradition. Development. Innovation" doctoral school conducts advanced research in the field of Educational Sciences. The aim of its doctoral study program is to train specialists recognized for their high level of competence in education, research and the transfer of research outputs into practice. The research activities of PhD students and their results make a consistent contribution to national and international research.

The doctoral school organises an annual international conference for PhD students to give them the opportunity for presenting their work and meet other PhD students, making international connections with those working in related subjects. Students are constantly encouraged to participate in international conferences from Romania and abroad. PhD students can participate also in the Erasmus+ mobility program, having the opportunity to study at a university from abroad. The school has many collaborations with doctoral schools from other universities.



CONTACT

Director of the doctoral school:

Professor CIASCAI Liliana, Ph.D.

E-mail: liliana.ciascai@ubbcluj.ro

Web: <http://sddid.psiedu.ubbcluj.ro/>



Doctoral School in Administration and Public Policy

Administrative Sciences

Doctoral supervisors

Ph.D. Professor Cătălin Ovidiu BABA

Public policies; Analysis of public policies; Health policies
catalin.baba@ubbcluj.ro

Ph.D. Professor Călin Emilian HINȚEA

Strategy and strategic planning; Leadership and Management in the public and non-profit sector
calin.hintea@ubbcluj.ro

Ph.D. Professor Răzvan Mircea CHERECHEȘ

Innovation in health; Digital health; Public Health Capacity Building; Health Behavior Change
razvan.chereches@ubbcluj.ro

Ph.D. Professor CHEREJI Christian Radu

Mediation of public disputes; Community conflict management mechanisms; Management of organizational conflicts; Group decision processes and facilitative leadership
christian.chereji@ubbcluj.ro

Ph.D. Professor MACARIE Felicia Cornelia

Gender discrimination in management; The impact of gender in the organizational culture of public organizations; The presence of women in the top management of public sector organizations; Measuring gender equality in public organizations; Gender discrimination in education; Internal public audit
felicia.macarie@ubbcluj.ro

Ph.D. associate Professor ANTONIE Ioana Raluca

Digital transformation of public services; Program evaluation; Life quality; Reducing marginalization; Economy and Digital Society; Social impact
raluca.antonie@ubbcluj.ro

Ph.D. Associate Professor NEAMTU Bogdana

Sustainable urban development; Resilience; Smart city; Urban dispersion and suburbanization and strategies for managing these phenomena; Sustainable public procurement; Transparency and free access to public information; Good governance; Alternative methods of resolving disputes in public law
bogdana.neamtu@ubbcluj.ro

Ph.D. Associate Professor STANICA Viorel

Community Development; Rural development; Strategic planning; Social Responsibility and Local Development; Territorial Organization
viorel.stanica@ubbcluj.ro

Finance

Doctoral supervisors

Ph.D. Professor LAZĂR Dan Tudor

Finance; Budgeting; Fiscal policy; Financial management; Local Economic Development
dan.lazar@ubbcluj.ro

CONTACT

Director of the doctoral school:

Ph.D. Professor Cătălin Ovidiu BABA

E-mail: catalin.baba@ubbcluj.ro

Web: <https://www.apubb.ro/romana/admitere-2>



The scientific approach of the school is a multidisciplinary one with focus on practical issues of administration and public policy in Romania, treated in European and international context.

Supervisors of doctoral studies in this school have an extensive experience in both theoretical and practical areas, the last one acquired in various institutions and structures of local and central administration.

Doctoral School in Administration and Public Policy collaborates with prestigious institutions of education and research around the world as well as academics and field practice.



Doctoral School of "Communication, Public Relations and Advertising"

Communication Sciences

Doctoral supervisors

Prof. univ. dr. habil. Delia Cristina BĂLAȘ

Social media research; Advertising and new media research; Media communication effects (media effects); Children, adolescent, and media; Media credibility, media credibility; Analysis of advertising through social media influencers; Privacy protection behavior in online and mobile communication; Social media and well-being

delia.balas@ubbcluj.ro

<https://www.sdcrrp.ro/coordonatori.html>

Prof. univ. dr. habil. Ioan HOSU

Online vs offline communication; Communication in the political space; Organizational communication; Strategic communication; Communication and society

ioan.hosu@ubbcluj.ro

<https://www.sdcrrp.ro/coordonatori.html>

Prof. univ. dr. habil. Flaviu-Călin RUS

Internal and external communication in private firms; Internal and external communication in public institutions; Interpersonal communication; Communication and PR in politics; Crisis communication; Communication and PR in conflict situations; Communication and negotiation in the international sphere; Communication and PR in the media field; Communication and PR in the NGO field; Public relations in the commercial/services fields; Sports PR; Cultural PR; Public relations in health; Public relations and events; Communication campaigns; PR campaigns; Branding; Advertising; Media research - classic and new media

calin.rus@ubbcluj.ro

<https://www.sdcrrp.ro/coordonatori.html>

Prof. univ. dr. habil. Cosmin IRIMIEȘ

New challenges of communication in the public space; Brand management, creation and management of institutional, location or country brands; Communication in crisis situations; PR and communication in sport; Lobbying as a method to achieve a successful democracy

cosmin.irimies@ubbcluj.ro

<https://www.sdcrrp.ro/coordonatori.html>

Prof. univ. dr. habil. VINCZE Hanna-Orsolya

New media and participatory practices; The transformation of news media; Online political communication; Media literacy; Media portrayals and representations; Communication and culture

hanna.vincze@ubbcluj.ro

<https://www.sdcrrp.ro/coordonatori.html>

Conf. univ. dr. habil. Ioana IANCU

Consumer behaviour and decision making; Emotions in advertising; Sensory branding; Attention in advertising; Smart advertising; Creativity in advertising

ioana.iancu@ubbcluj.ro

<https://www.sdcrrp.ro/coordonatori.html>

Prof. univ. dr. habil. KADAR Magor-Elek

Image analysis and image building; Reputation management; Place branding; Destination branding; Company branding; Institutional communication; Event management and branding; Personal branding; Sensorial branding; Strategic thinking and planning

magor.kadar@ubbcluj.ro

<https://www.sdcrrp.ro/coordonatori.html>



The Doctoral school of "Communication, Public Relations, and Advertising" includes coordinators from the communication sciences, political sciences and marketing fields, with research areas revolving around the communication analysis. Their scientific preoccupations comprise public relations, advertising, branding, political communication, public communication, strategic communication, communication on social network sites, religious communication etc.

Political Science

Doctoral supervisors

Prof. univ. dr. habil. Sandu FRUNZĂ

Ethical, social and political values of political correctness and its beneficial role in building balanced relations in the public sphere; Discrimination as a factor of imbalance in political construction. Negative effects of discrimination in the construction of political brands; Biopolitics, bioethics and religion in the 21st century

sandu.frunza@ubbcluj.ro

<https://www.sdcrrp.ro/coordonatori.html>

CONTACT

Director of the doctoral school:

Prof. univ. dr. habil. Delia Cristina BĂLAȘ (BALABAN)

E-mail: delia.balas@ubbcluj.ro

Web: <https://www.sdcrrp.ro/>

Marketing

Doctoral supervisors

Prof. univ. dr. habil. Smaranda COSMA

Governance of tourist destinations; Competitiveness and performance of tourist destinations; Impact of events on tourist destinations; Innovation in leisure activities; Research and development of tourism products; Promotion in the hospitality industry; Marketing policies and strategies in the business sphere; Policies and strategies

smaranda.cosma@ubbcluj.ro

<https://www.sdcrrp.ro/coordonatori.html>

Doctoral School of Political and Communication Sciences

Political Science

Doctoral supervisors

Gabriel BĂDESCU

Political culture, educational policies, civil society, social capital, participative democracy, inequality

gabriel.badescu@ubbcluj.ro

badescu@fspac.ro

<https://www.researchgate.net/profile/Gabriel-Badescu-2>

Cosmin MARIAN

Governance in Romania, political parties, electoral studies and voting behavior, analysis of the common property regime, public policies

cosmin.marian@ubbcluj.ro

Communication Science

Doctoral supervisors

Elena ABRUDAN

Visual Culture, Cultural Journalism, Cultural management

abrudan@fspac.ro / elena.abrudan@ubbcluj.ro

https://fspac.ubbcluj.ro/didactic/abrudan_elena.html

Ilie RAD

The publishing of Romanian writers, the history of the press in Romania, aspects of communist censorship

rad@fspac.ro

www.ilierad.ro

Zoltán Tibori SZABÓ

Communication of political regimes through mass media

tibori@fspac.ro

<https://ishg.fspac.ubbcluj.ro/>

Andreea MOGOS

Media representations in traditional media (written press, television) and in new media; Mechanisms of representation and self-representation in the new media; Content and semiotic analysis of visual representations (especially press photos and data visualizations); Analysis of the production of visual media content (both in traditional media and in new media; Analysis of media effects on the audience

mogos@fspac.ro

Cristina NISTOR-BEURAN

Emerging trends in the media industry; Innovation in digital media communication; Crisis communication management; The emergence of European journalism and the media coverage of the European Union; The radio industry in the online age – production, dissemination and consumption of audio content

cristina.nistor@fspac.ro

Ramona HOSU

Media representations of cultural identities

ramonahosu@fspac.ro

ramona.hosu@ubbcluj.ro

CONTACT

Director of the doctoral school:

Gabriel BĂDESCU

E-mail: gabriel.badescu@ubbcluj.ro

Web: <https://fspac.ubbcluj.ro/SDSPC/en/index.html>



The doctoral school's primary mission is to develop an interdisciplinary scientific research framework focusing on political and communication sciences and sound social research methodology. The school benefits from the support and involvement of all members of the Department of Political Sciences and the Department of Journalism and Digital Media, as well as of the Center for the Study of Democracy, the Center for the Comparative Study of Migration, the Research Center of Media Systems and Languages, and the Media Center.

The Doctoral School of Political and Communication Sciences has an active role in the national and international academic community by engaging in academic and policy research on topics that include political communication; media and cultural identity; emerging trends in the digital media industry; participative democracy; interactive narratives in digital games; electoral studies and voting behaviour; communication of political regimes through mass media; crisis communication management; content and semiotic analysis of visual representations; media representations of cultural identities.



Doctoral School of Linguistic and Literary Studies

Doctoral supervisors

Prof. univ. dr. András BALOGH

German literature, German literature in Central and Southeast Europe, literary contacts, the theory from the regional space, imagology

andras.balogh@ubbcluj.ro;

<https://germanistik-cluj.jimdofree.com/%C3%BC-ber-uns/mitglieder-des-lehrstuhls/>

Conf. univ. dr. habil. Bianca-Elena BICAN

Modern and contemporary German literature; reception history; German regional culture in Transilvania and Romania in the 19th and 20th centuries; German regional press in Transilvania in the 19th and 20th centuries; German-Romanian intercultural relations

bianca.bican@ubbcluj.ro

Prof. univ. dr. Ioana BICAN

Romanian Literature (19th Century - Present Day), History of Romanian Literary concepts in European Context, Modern Philology

ioana.bican@ubbcluj.ro,

<http://fim.centre.ubbcluj.ro/membri/membri-titulari/ioana-bican/>

Prof. univ. dr. Corin BRAGA

World Literature, Comparative Literature, Imagination Studies, Literature – History of Religions – Psychoanalysis

corin.braga@ubbcluj.ro

https://en.wikipedia.org/wiki/Corin_Braga

Prof. univ. dr. Ruxandra-Mihaela BRAGA (CESEREANU)

World Literature, Comparative Literature, Modern and Postmodern Poetry, Literature and Totalitarianism

ruxandra.braga@ubbcluj.ro

https://en.wikipedia.org/wiki/Ruxandra_Cesereanu

Prof. univ. dr. habil. Adrian CHIRCU

Romanian Language, Romance Linguistics

adrian.chircu@ubbcluj.ro

https://lett.ubbcluj.ro/wpcontent/uploads/2021/10/adrianchircu_Prezentare_Publicatii_EN.pdf

Prof. univ. dr. habil. Rodica FRENȚIU

Cultural Semiotics and Japanese Poetics, Traductology

rodica.frentiu@ubbcluj.ro

Prof. univ. dr. Yvonne GOGA

Modern and Contemporary French Literature

yvonne_goga@yahoo.fr

Prof. univ. dr. habil. Anca GREERE

Linguistics/Translation Studies

anca.greere@ubbcluj.ro

Conf. univ. dr. habil. Simona-Alina JIȘA

Modern and contemporary French and Francophone literature

simona.jisa@ubbcluj.ro

Prof. univ. dr. Michaela MUDURE

British Enlightenment, post-colonial literatures, ethnic literatures in the USA, literature and gender

mmudurester@gmail.com,

michaela.mudure@ubbcluj.ro

Prof. univ. dr. Ștefan OLTEAN

Semantics of English, generative syntax, multilingualism

stefan.oltean@ubbcluj.ro

Prof. univ. dr. habil. Adrian PAPAHAĞI

Old, Middle, and Early Modern English literature; manuscript studies; the history of the book in the medieval and early modern periods

adrian.papahagi@ubbcluj.ro

<https://centrulcodex.com/>

Conf. univ. dr. habil. Elena PLATON

Romanian as a foreign/second language

elenaplanton99@yahoo.com

Conf. univ. dr. habil. Horia-Flavius POENAR

Literary and cultural theory

horia.poenar@ubbcluj.ro



The Doctoral School of Linguistic and Literary Studies – organized at the Faculty of Letters aims at the continuation of the Bachelor and Master's studies on scientific grounds which could allow the doctoral candidate to follow either the research path, or the teaching career at an academic level. The scientific and didactic activities encompassed in the curricula range from courses, seminars, laboratories, to workshops. The conferences and formation modules provided by the faculty, the university or other partner institutions enable students to do and conduct scientific research. The doctoral school encourages doctoral students to take part in international exchange programmes carried out in foreign languages which improve the competences specific to philological studies. In addition, the doctoral school actively contributes to the organization of activities in foreign languages by inviting international specialists and doctoral co-advisors in order to raise the local scientific prestige and raise awareness of the doctoral programmes offered in our university.

Prof. univ. dr. habil. Liana POP

French and Romanian Linguistics, Pragmatics, Discourse Analysis

liana.pop@ubbcluj.ro

Prof. univ. dr. emeritus Rodica POP

French literature, Belgian literature, Francophone comparative studies and Traductology

rodica.pop@ubbcluj.ro

Prof. univ. dr. Mihaela URSA (POP)

Comparative literature, world literature

mihaela.ursa@ubbcluj.ro

Prof. univ. dr. habil. Călin TEUȚIȘAN

Literary History and History of Romanian Literature

calin.teutisan@ubbcluj.ro

Prof. univ. dr. Sanda TOMESCU-BACIU

Norwegian Language And Literature

sanda.tomescu@yahoo.com

Prof. univ. dr. Ligia-Stela FLOREA

French Linguistics, Text Pragmatics, Discourse Analysis

lsflorea@yahoo.fr

CONTACT

Director of the doctoral school:

Professor Adrian CHIRCU

E-mail: adrian.chircu@ubbcluj.ro; secretariatsdsll@gmail.com

Web: <https://lett.ubbcluj.ro/scoala-doctorala-de-studii-lingvistice-si-literare/?lang=en>

Doctoral School of Hungarian Studies

Doctoral supervisors

Dr. habil. BENŐ Attila (University Professor)

Sociolinguistics, language contacts, translation studies
<http://hunlang.lett.ubbcluj.ro/hu/tanarok/beno-attila-t>

Dr. habil. BERSZÁN István (Associate Professor)

Theory of literature

<http://hunlit.lett.ubbcluj.ro/ro/profesor/berszan-istvan>

Dr. EGYED Emese (retired university professor)

Comparative literature, Hungarian literature, French literature, European history of theater, culture of Transylvania

<http://hunlit.lett.ubbcluj.ro/hu/tanarok/egyed-emese>

Dr. GÁBOR Csilla (University Professor, member of the Hungarian Academy of Sciences)

Devotional literature, hagiography, early modern polemics

<http://hunlit.lett.ubbcluj.ro/hu/tanarok/gabor-csilla>

Dr. KESZEG Vilmos (Professor Emeritus)

The anthropology of orality and writing, biographical memory, autobiographical speech, the culture of the Transylvanian Plains

<http://etno.lett.ubbcluj.ro/teaching-staff/members/keszeg-vilmos/>

Dr. POZSONY Ferenc (Professor Emeritus, Member of the Hungarian Academy)

Social ethnography, ethnicity and ethnography
<http://etno.lett.ubbcluj.ro/teaching-staff/members/pozsony-ferenc/>

Dr. habil. TÁNCZOS Vilmos (University Professor)

Traditional folklore research, popular religiosity, symbolism in popular culture, ethnic and religious identity
<http://etno.lett.ubbcluj.ro/teaching-staff/members/tanczos-vilmos/>

Dr. habil. T. SZABÓ Levente (Associate Professor)

History of 19th-century Hungarian literature, comparative literature, literary sociology, history of 19th-century Eastern European theatre and press

<http://hunlit.lett.ubbcluj.ro/hu/tanarok/t-szabo-levente>
www.szabolevente.ro

Affiliate member of the doctoral school and doctoral supervisor

Dr. habil. DOMOKOS Johanna Associate Professor

Comparative literature, performance studies, translation, postmodern drama, multilingualism

https://ekvv.uni-bielefeld.de/pers_publ/publ/PersonDetail.jsp?personId=10430260

CONTACT

Director of the doctoral school:

Conf. univ. dr. habil. T. SZABÓ Levente

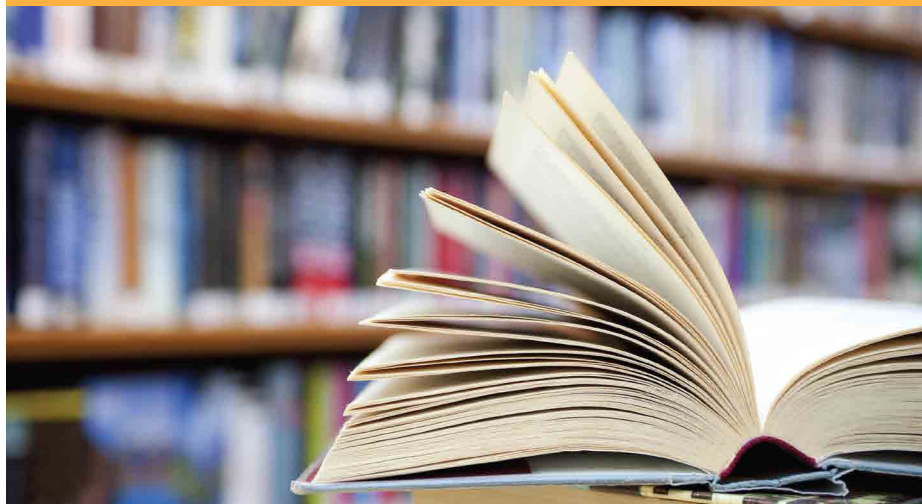
E-mail: tszabo.levente@ubbcluj.ro

Web: <https://lett.ubbcluj.ro/hungarologiai-tudomanyok-doktori-iskola/>



The Doctoral School in Hungarology Studies covers the research areas of philology (language and literature, journalism, ethnology) for studies in Hungarian language at Babeş-Bolyai University. The professors of the doctoral school belong to the Department of Hungarian Literature, to the Department of Hungarian and General Linguistics and to the Department of Hungarian Ethnography and Anthropology as well as to the Department of Journalism and Political Sciences (Faculty of Political, Administrative and Communication Sciences). Visiting professors of the school are specialists in these fields. The doctoral school promotes interdisciplinary and intercultural dialogues and cooperates with scientific institutes in the domain (Hungarian Academy of Sciences, Transylvanian Museum Society and others) and with other doctoral schools and scientific institutes.

The doctoral students' articles and theses are published in accredited scientific journals as *Erdélyi Tudományos Füzetek*, *Emberek és kontextusok*, *Erdélyi Múzeum*, *Nyelv- és Irodalomtudományi Közlemények*, *Irodalomtörténeti füzetek*.



Doctoral School in Law

Doctoral supervisors

Associate professor Sorin-Octavian ALĂMOREANU Ph.D.

Forensic Science

sorin.alamoreanu@law.ubbcluj.ro

Professor Mircea-Dan BOB-BOCȘAN, Ph.D.

Roman Law. Civil law - Legacies and liberties

mirceabob@law.ubbcluj.ro

Professor Sergiu BOGDAN, Ph.D.

Criminal Law. Special Part

sergiu.bogdan@law.ubbcluj.ro

Professor Radu-Nicolae CATANĂ, Ph.D.

Business Law

radu.catana@law.ubbcluj.ro

Professor Dacian-Cosmin DRAGOȘ, Ph.D.

Administrative Law. Public Procurement Law

dragos@fspac.ro

Professor Gheorghiță MATEUȚ, Ph.D.

Law of Criminal Proceedings

gheorghita.mateut@law.ubbcluj.ro

Professor Ovidiu-Laurențiu PODARU, Ph.D.

Administrative Law

ovidiu.podaru@law.ubbcluj.ro

Professor Ionuț-Florin POPA, Ph.D.

Civil Law. Obligations

ionut.popa@law.ubbcluj.ro

Professor Ioan-Florin STRETEANU, Ph.D.

Criminal Law. General Part. General Theory of Crimes

florin.streteanu@law.ubbcluj.ro

Professor Paul-Dinu VASILESCU, Ph.D.

Civil Law. Obligations

paul.vasilescu@law.ubbcluj.ro

Professor Ioana VASIU, Ph.D.

Criminal Law. Computer Law

ioana.vasiu@law.ubbcluj.ro

The Faculty of Law organizes the Doctoral School in Law (public and private law). Doctoral studies are open to all candidates holding a Master's degree or an equivalent academic degree.

The goal is to train researchers in law at the highest level of international competitiveness. The doctoral school is led by a director responsible for the day-to-day management and is accountable to the Council for Doctoral Studies.

The mission of the doctoral school is to organize the recruitment of future doctoral students through a public and transparent procedure in the context of the general policy of the university ; to ensure the scientific quality of mentoring doctoral students by personalizing their work, while ensuring the best conditions for the development of their doctoral thesis. The aim is also to ensure that doctoral students learn the research methods of law, based on continental law and comparative methods, as well as on the EU law.

The doctoral training is designed to best meet the major current topics in legal research and to be able to adapt to the future ones.

The doctoral school can support scientific and intellectual exchange between doctoral students of the doctoral schools in the university, as well as with national and international partners of the university. The doctoral school supports joint doctoral degrees. This objective is pursued through collaborative actions with partner higher education institutions.



CONTACT

Director of the doctoral school:

Professor Ovidiu-Laurențiu PODARU Ph.D.

E-mail: ovidiu.podaru@law.ubbcluj.ro

Web: https://law.ubbcluj.ro/index.php?option=com_content&view=category&layout=blog&id=37&Itemid=177

Doctoral School Physical Education and Sport

Doctoral supervisors

Prof. univ. dr. Emilia Florina GROSU

Ways to optimize sports performance in sports science, Psychomotricity, Mental training techniques used to optimize sports performance, Fitness, Physical education, Leisure activities, Psychomotor education and re-education techniques in physical therapy
emilia.grosu@ubbcluj.ro
emiliaflorina.grosu@gmail.com

Prof. univ. dr. Iosif SANDOR

Human movement and sports science. Physical activity for sports performance and health: correlates and influences. Methodology and management of sports activities in different geographical environments
iosif.sandor@ubbcluj.ro
isandor2001@gmail.com

Conf. univ. dr. Dan MONEA

The ability to perform in different sports. Biomechanics - the study of movement. Sports training and methods of quantifying physical training. Motor, conditional and coordination skills in performance sports. Physiotherapy and recovery in performance sports using means and methods adapted to athletes
dan.monea@ubbcluj.ro
moneadan1976@gmail.com

Professor Iacob HANȚIU

History of physical education and sports; Movement analysis in different sports disciplines (sports games, skiing, tennis, shooting sports, etc.); Physical activities in different population categories; Recreational physical activities; Physical activity in people with disabilities
iacob.hantiu@ubbcluj.ro
iacobhantiu@gmail.com

Prof.univ.dr. Gheorghe MONEA

The Scientific Foundations of Performance Ability
moneagheorghe47@gmail.com

Associated Ph.D. Coordinators

Prof.dr. Emanuele ISIDORI

Philosophy of movement, qualitative analyse
labpedagogia@gmail.com

Prof.dr. Kostantionos KARTEROLIOTIS

Equation Modeling in sport and exercise science
ckarter@phed.uoa.gr



The field of doctoral studies in which the Doctoral School of Physical Education offers PhD is Science of Sport and Physical Education. Current doctoral students are from Romania and Israel, and courses are taught in English and Romanian. Within the FEFS Cluj-Napoca Erasmus programme the following international partnerships have been signed at doctoral level: Universite de Rouen (FR), National and Kapodistrian University of Athens (GR), Università degli Studi di Roma Foro Italico (IT), University Summelweis (HU), Universidade de Tras-os-Montes e Alto Douro (PT).



CONTACT

Director of the doctoral school:

Prof. univ. dr. Emilia Florina GROSU

E-mail: emilia.grosu@ubbcluj.ro /
emiliaflorina.grosu@gmail.com

Web: <https://sport.ubbcluj.ro/en/departamentul-de-studii-doctorale/>

Doctoral School in Theatre and Film

Theatre and Performing Arts Doctoral supervisors

Prof. univ. dr. habil. Miklós BÁCS

Research Techniques and Methods in Theatre and Performance Studies. The actor's art from an anthropological perspective. Contemporary trends in artistic research

miklos.bacs@ubbcluj.ro

Prof. univ. dr. habil. HATHÁZI András

The problem of the actor's presence. Studies on a creative methodology / theatrical pedagogy related to the actor's art

andras.hathazi@ubbcluj.ro

Prof. univ. dr. habil. Laura TEUTIȘAN

Intertextual rewriting of the theatrical canon. Identity representations, anthropological and intercultural stakes of the performance phenomenon. Fictional, virtual, performative - aesthetic experience and utopian/dystopian imaginary in the multimedia age. Performativity, visibility, literariness - the dialogue of aesthetic perspectives and interdisciplinary cultural analysis

laura.teutisan@ubbcluj.ro

Professor Iacob HANȚIU

History of physical education and sports; Movement analysis in different sports disciplines (sports games, skiing, tennis, shooting sports, etc.); Physical activities in different population categories; Recreational physical activities; Physical activity in people with disabilities

iacob.hantiu@ubbcluj.ro

iacobhantiu@gmail.com

Prof. univ. dr. habil. András VISKY

Transfiguring the tradition of Hamburg dramaturgy in contemporary theatre. Post-literary playwriting aesthetics. Contemporary drama and the social-political relevance of the theatrical act. Playwrights: literary work and theatrical reception. Rituality and performance. Performative shift and contemporary theatre performance. Directorial aesthetics in contemporary theatre

andras.visky@ubbcluj.ro

Conf. univ. dr. habil. Diana COZMA

Innovative directions in the dramaturgy of stage practitioners. Multidisciplinary studies on the living presence of the actor/performer. Comparative studies on the theatre laboratory. Reforms in theatre (20th-21st century): comparative studies. Interdisciplinary studies on stage creation techniques

diana.cozma@ubbcluj.ro

Conf. univ. dr. habil. Anca HAȚIEGAN

History and theory of theatre. History of Romanian theatre. Feminine history of theatre. Theatre-literature interferences. Theatre and history

anca-hatiegan@ubbcluj.ro



The Doctoral School in Theatre at Babeș-Bolyai University offers to its students a professional, open and supportive environment for research concerning the full spectrum of performing arts and contiguous fields such as theatre history, dramatic literature, performance theory, audience studies, theatre pedagogy or cultural management and marketing.

Advanced courses are offered in the areas of theatre semiotics, audience studies, contemporary stage-directing, the historical relationships between theatre and cultural and political ideologies, actively encouraging interdisciplinary approaches (anthropology, sociology, film studies etc.).

Our faculty, a mix of prominent theatre practitioners and accomplished scholars, will constantly strive to assist the student during the research, writing and publishing stages of the doctoral thesis.

Film and Media Doctoral supervisors

Prof. univ. dr. habil. Rodica MOCAN

Interactive digital performance. New arts in the digital age. Art and science. New media documentary

rodica.mocan@ubbcluj.ro

Prof. univ. dr. habil. Doru-Aurel POP

The evolution of contemporary Romanian film. Film genres and narrative structures in contemporary cinema

doru.pop@ubbcluj.ro

Prof. univ. dr. habil. Ioan POP-CURȘEU

Aesthetics. Film Theory. Visual anthropology and cultural anthropology. 19th century literature and culture

ioan.pop-curseu@ubbcluj.ro

Conf. univ. dr. habil. Dan CUREAN

The image of audio-visual media discourse. Audio-visual language. Specificities of non-fiction film

dan.curean@ubbcluj.ro

Conf. univ. dr. habil. Constantin PÂRVULESCU

Contemporary and post-war Romanian, European and North American cinema. Digital distribution, marketing and reception of film and television. Film and economics, film and history, film and politics. Cultural, organisational, transnational and multimodal approaches to cinema and television

constantin-parvulescu@ubbcluj.ro

Conf. univ. dr. habil. Nicoleta SĂLCUDEAN

Cultural Studies. Sociology of culture. Creative industries

nicoleta.salcudean@ubbcluj.ro

Conf. univ. dr. habil. Claudiu TURCUȘ

Criticism and intellectual history in Central and Eastern European cultures: representations of Europeanization. Post-communist imagology and ideology: literature and cinema. Intermediality and recent memory: remembering communism. Political approaches to Romanian film from the socialist period. The restructuring of the Romanian film industry - legislation, modes of production, forms of institutionalization

claudiu.turcus@ubbcluj.ro

Conf. univ. dr. habil. Florin ȚOLAȘ

The visual expression of reality in documentary film. Means of visual expression specific to the film and television cinematographer. Developments and current trends in lighting for film and television

florin.tolas@ubbcluj.ro

CONTACT

Director of the doctoral school:

Prof. Ioan Pop-Curșeu, Ph.D.

E-mail: ioan.pop-curseu@ubbcluj.ro/

mihai.pedestru@ubbcluj.ro

Web: <http://doctorat.ttv.ubbcluj.ro/>

Doctoral School in Economics and Business Administration

Accounting Doctoral supervisors

Prof. Adela DEACONU, PhD

EN, FR, RO: general accounting, financial reporting, accounting history, fair value accounting, business and assets valuation

adela.deaconu@econ.ubbcluj.ro

Prof. Cristina Silvia NISTOR, PhD

RO, EN: holistic accounting; public sector accounting; financial and non-financial reporting; international public accounting standards; accounting history; accounting profession

cristina.nistor@econ.ubbcluj.ro

Prof. Adriana TIRON-TUDOR, PhD

EN, RO: financial and non-financial reporting; public sector accounting, auditing and control; accounting profession history, ethics, dilemmas, challenges

adriana.tiron@econ.ubbcluj.ro

Conf. univ. dr. ȘTEFĂNESCU Cristina Alexandrina

EN, RO: accounting and auditing, financial and non-financial reporting, behavioural accounting, digital accounting and reporting, accounting innovation

cristina.palfi@econ.ubbcluj.ro

Business Information Systems Doctoral supervisors

Prof. Robert Andrei BUCHMANN, PhD

EN, RO: semantic technologies in information systems, enterprise modeling, knowledge management systems

robert.buchmann@econ.ubbcluj.ro

Conf. Rodica Ioana LUNG, PhD

EN, RO: game theory, classification, optimization

rodica.lung@econ.ubbcluj.ro

Conf. Daniel MICAN, PhD

EN, RO: recommendation systems, user behavior, digital transformation, PLS-SE

daniel.mican@econ.ubbcluj.ro

Prof. Gheorghe Cosmin SILAGHI, PhD

EN, RO: distributed systems, cloud and high performance computing, machine learning and data science, multi-agent systems, security and dependability

gheorghe.silaghi@econ.ubbcluj.ro

Conf. Dan-Andrei SITAR-TĂUT

EN, RO: decision support systems, recommendation systems, social media trends, acceptance and adoption of new technologies, e-/m-learning, telework, e-health

dan.sitar@econ.ubbcluj.ro

Affiliated supervisors

Prof. Dimitris KARAGIANNIS, PhD

University of Vienna, Austria – EN: enterprise information systems, business process management systems, knowledge engineering, conceptual modeling

dimitris.karagiannis@univie.ac.at

Conf. Ioan PETRI, PhD

Cardiff University, UK – EN, RO: cloud and edge computing, artificial intelligence, sharing economies and collaborative consumption, digital twin

ioan.petri@econ.ubbcluj.ro

Cybernetics and Statistics

Doctoral supervisors

Prof. Cristian Mihai DRAGOȘ, PhD

FR, RO: econometrics and statistics with a preference for discrete regression and qualitative choice models, bibliometrics and scientometrics

cristian.dragos@econ.ubbcluj.ro

The doctoral school of Economics and Business Administration (SEGA) being the largest inside the University, is particularly complex and pragmatic as research areas, owning a history of more than half a century.

The international cooperation proved by joint doctoral theses and affiliated supervisors have raised the scientific quality of the doctoral programs and theses and therefore the international visibility of the publications subsumed.

Romanian and foreign students as well, have the opportunity of a closer connection to the international scientific knowledge, by elaborating and defending their work in English (EN), German (GE), French (FR) or Hungarian (HU).

The students could address a variety of issues in Economics and Business, inside 8 research domains. Research topics and proven competencies of supervisors are meant to enhance students' critical thinking and professional judgment, leading them to be prominent within national and international intellectual elites, and among leaders and personalities in the economic professions. In the climate of contemporary challenges and continuous changes of ideas, the training offered by SEGA can facilitate their adaptation to innovation by using their research skills and creativity.



Prof. Dorina LAZĂR, PhD

EN, RO: applied statistics and econometrics

dorina.lazar@econ.ubbcluj.ro

Conf. Codruța MARE, PhD

EN, RO: cybernetics and statistics with a preference on spatial econometrics

Economics Doctoral supervisors

Prof. Monica Ioana POP SILAGHI, PhD

EEN, RO: applied economics with a preference for economic growth, total factor productivity, migration, human capital, R&D, macroeconomic policies, financial and economic crises

monica.silaghi@econ.ubbcluj.ro

Affiliated supervisors

Prof. Ioana Cosmina SCHIOPU, PhD

ESADE Business School, Barcelona – EN, RO: Economics of Human Capital; Macroeconomics, growth and inequality

ioana.schiopu@esade.edu

Prof. Zsolt SÁNDOR

Sapientia University Cluj-Napoca – EN, HU, RO: microeconomics and instrumental variables, empirical industrial organization, applied microeconomics, design of choice experiments

sandorzolt@uni.sapientia.ro

Finance Doctoral supervisors

Prof. Monica Violeta ACHIM, PhD

EN, RO: business and finance, with a preference for corporate finance, financial analysis, public finance and taxation

monica.achim@econ.ubbcluj.ro

Prof. Cristina CIUMAȘ, PhD

EN, RO: insurance

cristina.ciumas@econ.ubbcluj.ro

Prof. Simona Laura DRAGOȘ, PhD

EN, RO: insurance

simona.dragos@econ.ubbcluj.ro

Conf. Simona NISTOR, PhD

EN, RO: banking

simona.mutu@econ.ubbcluj.ro

Conf. Maria Miruna POCHEA, PhD

EN, RO: Behavioral finance

miruna.pochea@econ.ubbcluj.ro

Prof. Alexandru TODEA, PhD

EN, RO: financial markets, corporate finance

alexandru.todea@econ.ubbcluj.ro

Conf. univ. dr. NAGY Balint Zsolt

HU, RO, EN, Financial economics, Financial econometrics, Financial markets, Investment valuation, Behavioural finance

balint.nagy@econ.ubbcluj.ro

Doctoral School in Economics and Business Administration

Management Doctoral supervisors

Conf. Emil Lucian CRIȘAN, PhD

EN, RO: digital transformation, technology transfer, Web 3.0, supply chain management, new product development

emil.crisan@econ.ubbcluj.ro

Prof. Răzvan Liviu NISTOR

EN, RO: project management, quality management, educational management, technology transfer

razvan.nistor@econ.ubbcluj.ro

Prof. Levente SZÁSZ, PhD

EN, HU: operations and supply chain management with special focus on: Industry 4.0, management of multinational companies, knowledge management, sustainability, servitization

levente.szasz@econ.ubbcluj.ro

Prof. Monica-Aniela ZAHARIE, PhD

EN, RO: Job performance; talent management; sustainable HRM; virtual teams, E-HRM; employee well-being; e-leadership; career management; psychological contract; organizational behavior

monica.zaharie@econ.ubbcluj.ro

Marketing Doctoral supervisors

Conf. Monika Anetta ALT, PhD

EN, HU, RO: digital marketing strategies and tactics, performance of digital marketing, quality of digital services, consumer acceptance of new technologies

monika.alt@econ.ubbcluj.ro

Prof. Dan Cristian DABIJA, PhD

EN, GE, RO: retail marketing, generational marketing, green retailing, international retail marketing, sustainable retailing and sustainable marketing, international tourism, consumer behavior

ristian.dabija@econ.ubbcluj.ro

Conf. Ovidiu-Ioan MOISESCU, PhD

EN, RO: brand management, online marketing, tourism marketing, corporate social responsibility

ovidiu.moiescu@econ.ubbcluj.ro

Prof. Ciprian-Marcel POP, PhD

EN, RO: service marketing, strategic marketing, holistic marketing

marcel.pop@econ.ubbcluj.ro



CONTACT

Director of the doctoral school:

Alexandru TODEA, PhD

E-mail: alexandru.todea@econ.ubbcluj.ro

Secretary of PhD School:

Ec. Camelia Dora MOLDOVAN

E-mail: camelia.moldovan@econ.ubbcluj.ro

Web: https://econ.ubbcluj.ro/en/n1.php?id_m=28&m=Doctoral%20studies

"Isidor Todoran" Doctoral School in Orthodox Theology



The Doctoral School in Theology from the Faculty of Orthodox Theology through the efforts of teachers and several doctoral students, established a precious documentation infrastructure for its students and researchers.

The doctoral students conduct research projects on topical issues relevant to the contemporary interconfessional and interreligious dialogue. Since 2008, in the faculty are organized every year scientific sessions with the participation of doctoral students from other faculties from the country and from abroad. The findings of these scientific meetings materialized in the publication of several volumes of studies.



Doctoral supervisors

Ioan CHIRILĂ

Biblical Theology of the Old Testament with notions of Biblical Archeology and Classical Hebrew Language

ioan.chirila@ubbcluj.ro

Gabriel GÂRDAN

Universal Church History

gabriel.gardan@ubbcluj.ro

Ștefan ILOAIE

Christian Morality

stefan.iloaie@ubbcluj.ro

Cristian-Sebastian SONEA

Orthodox Missiology and Ecumenical Theology

cristian.sonea@ubbcluj.ro

Vasile STANCIU

Church music and ritual

vasile.stanciu@ubbcluj.ro

Teofil TIA

Pastoral Theology

teofil.tia@ubbcluj.ro

Stelian TOFANA

Bible Study and New Testament Exegesis

stelian.tofana@ubbcluj.ro

Nicolae TURCAN

Fundamental Theology (Apologetics)

nicolae.turcan@ubbcluj.ro

Patriciu VLAICU

Canon law and Church administration

patriciu.vlaicu@ubbcluj.ro

Associated Ph.D. Coordinators

Andrei ANDREICUȚ

Orthodox Christian Spirituality

andrei.andreicut@ubbcluj.ro

Valer BEL

Missiology and Ecumenism

valer.bel@ubbcluj.ro

Alexandru MORARU

History of the Romanian Orthodox Church with notions of Paleography

alexandru.moraru@ubbcluj.ro

Ioan Vasile LEB

Universal Church History

ioan.leb@ubbcluj.ro

Vasile GORDON

Homiletic and Catechetical

vasile.gordon@ubbcluj.ro

CONTACT

Director of the doctoral school:

Vasile STANCIU

E-mail: vasile.stanciu@ubbcluj.ro

Web: <http://sdoct.orth.ro>

“Ecumene” Doctoral School in Theology

Doctoral supervisors

Lehel LÉSZAI

Biblical Theology, Pedagogy of Religion, Pastoral Theology
lehel.leszai@ubbcluj.ro

<https://ubbcluj.academia.edu/LeszaiLehel>

Emilia Corina ZAMFIR

Theology: New Testament and Early Christian Literature: Pastoral Epistles, Early Christian communities and voluntary associations, the Acts of Thecla and women in early Christianity. Hebrew Bible (the psalms of lament, wisdom literature). Ecumenical theology (Catholic-Protestant dialogue on ecclesiology and sacramental theology)

emilia.zamfir@ubbcluj.ro

<https://ubbcluj.academia.edu/KorinnaZamfir>

Mózes NÓDA

Liturgical theology, the liturgical movement, the liturgical reform of Vatican II Church History / History of the Roman Catholic Church in Transylvania in the 20th century

mozes.noda@ubbcluj.ro

Sándor FAZAKAS

Pastoral Theology, Systematic Theology, Pedagogy of Religion

fazakass@drhe.hu

Gusztáv KOVÁCS

Social-, Fundamental-, Clinical-, Medical-, Christian Ethics

dr.kovacs.gusztav@gmail.com

Stefan Andreas TOBLER

Systematic Theology, spirituality and mysticism; islamic-christian dialogue; orthodox-lutheran dialogue; human rights; social inclusion and national minorities

stefan.tobler@ev-theol.ro

Associated Ph.D. Coordinators

Gábor HÉZSER

Pastoral Psychology and Systems Theory, including individual and family Pastoral Care, Practical Theology, Ecumenism

gabor@hezser.de

Kinga BAKK-MIKLÓSI

Pastoral Psychology, Clinical psychology and Psychotherapy, Art Psychology, Advertising Psychology, Educational Psychology

kinga.bakk@ubbcluj.ro

CONTACT

Director of the doctoral school:

Lehel LÉSZAI

E-mail: lehel.leszai@ubbcluj.ro

Web: <http://ecumene.rt.ubbcluj.ro/ro/scoala-doctorala-ecumene/>



The doctoral studies are organized over a period of 3 academic years, and they include:

- A training programme based on advanced academic studies within the doctoral school and consists of activities in institutionalized formations of study;
- An individual programme of scientific research;
- Doctoral studies end with the public defence of an original paper called doctoral thesis, which is the result of the research conducted by the doctoral student.

Doctoral studies can be conducted in one of the following languages: Romanian, Hungarian, German and English.



“Religion, culture, society” Doctoral school in Roman Catholic Theology

The name for the doctoral school - “Religion, Culture, Society” - is the result of a reflection that seeks to position future research socially and ecclesiastically, in the spirit of Vatican II, and thereby also to raise awareness of the importance of religion, culture and society in a compelling reciprocity. This paradigm of theological research is taken for granted in Western Europe, but has remained rather alien to the Catholic minority church in our country, most of whose members also belong to an ethnic minority.

With the new research paradigm, the mega-topics of post-conciliar theology are brought into view in such a way that the focus on the following overarching question always remains in the foreground: The role and possibilities of the concrete application of Catholic Social Teaching for a vital Church in Romania, in the Hungarian-speaking area, in East Central Europe. Indeed, the post-communist societies of East-Central Europe continue to be in transition, and the relevant question arises daily as to what role Catholic higher education and theology should play in this protracted transition process, so that the inherent values of these societies are not entirely lost in the transition.

In this sense, this Doctoral School pursues the overarching goal of supporting the professionalisation of the Church towards greater engagement with social and pastoral challenges of today. In doing so, Catholic Social Teaching is our central guideline, not only referring to the preferential option for the poor, but also focusing on the issues of solidarity, human dignity and the principle of subsidiarity. The necessary link between theoretical teaching and practical application is thereby realised by the fact that the research projects of the doctoral college ultimately serve to professionalise present and future leaders, who are an indispensable building block in the process of developing vital communities in which social and pastoral commitment are organically linked.

Doctoral supervisors

Prof. dr. habil. CSISZAR Clara-Antonia

Pastoral theology, missiology, church history, pastoral psychology

k.csiszar@ku-linz.at

https://kulinz.at/theologie/institute/pastoraltheologie/personen?tx_persons_personlist%5Baction%5D=show&tx_persons_personlist%5Bperson%5D=254&cHash=5ca2e2a6c0ddeb4261d4883a2d3909f

Prof. dr. habil. DIÓSI Dávid

Theology of the Holy Eucharist, the Church in the postmodern age, funeral rites and the mourning of (post)modern man

david.diosi@ubbcluj.ro

<https://ubbcluj.academia.edu/DavidDiosi>

Prof. dr. habil. HOLLÓ László

Moral theology, social teaching of the Church, Church history

hollo.laszlo@ubbcluj.ro

<https://ubbcluj.academia.edu/LaszloHollo>

Conf. dr. habil. VIK Ioan

Fundamental theology, spirituality, logotherapy and existential analysis, border area between theology and natural sciences

janos.vik@ubbcluj.ro

<http://dialogus.ro/>



CONTACT

Director of the doctoral school:

Prof. dr. habil. HOLLÓ László

E-mail: hollo.laszlo@ubbcluj.ro

Web: <https://dr.rocateo.ubbcluj.ro/>

Doctoral School of Engineering

Doctoral supervisors

Prof. dr. eng. Gilbert-Rainer GILLICH

Development of non-destructive testing techniques based on vibration signal analysis; monitoring of engineering structures for early detection of defects and prediction of service life; isolation of noise and vibration, including from seismic action; advanced signal processing; development of autonomous non-destructive testing systems

gilbert.gillich@ubbcluj.ro

https://eng.ubbcluj.ro/?page_id=167#toggle-id-2

Assoc. Prof. dr. eng. habil. Zoltan-Iosif KORKA

Vibro-acoustic diagnosis of mechanical transmissions; reliability of mechanical transmissions; computer-aided design of mechanical systems; programming of numerically controlled equipment

zoltan.korka@ubbcluj.ro

https://eng.ubbcluj.ro/?page_id=167#toggle-id-8

Lecturer dr. eng. habil. Zeno-Iosif PRAISACH

Development of non-destructive testing techniques based on vibration signal analysis; monitoring of engineering structures for early detection of defects and prediction of service life; advanced signal processing; development of autonomous non-destructive testing systems

zeno.praisach@ubbcluj.ro

Associated Ph.D. Coordinators

Assoc. Prof. dr. eng. habil. Tiberiu MĂNESCU

Strength of materials; kinematics and dynamics of bearings; numerical modelling and simulation; finite element method.

manescu.tiberiu@gmail.com

The Faculty of Engineering from Babeş-Bolyai University offers the 3rd cycle of academic studies in the form of PhD programmes in the doctoral degree area Mechanical Engineering, within the Doctoral School of Engineering. Target groups are graduates of master programmes in Mechanical Engineering, Industrial Engineering, Mathematics, Computer Science, Computer Engineering and Natural Sciences.

The programmes are promoting high-quality fundamental and applied research in Mechanical Engineering, as well as interdisciplinary research, by involving the PhD students in the most important and recent research projects of the faculty, including international cooperation with academic and industrial partners.

The major research topics that are studied within the doctoral school are Mechanical Engineering are: Mechanics, Mechanisms and Machine Parts, Mechanical Vibration, Material Strength, Hydraulics and Hydraulic Machines, Thermotechnics and Thermal Machines.

The mission and objectives of the Doctoral school of Engineering are in the lines of the general mission of UBB, allowing PhD students to pursue a high-quality research, increasing the scientific quality of mentoring doctoral students and the quality of their PhD theses. The Doctoral School supports also joint doctoral degrees.

CONTACT

Director of the doctoral school:

Assoc. Prof. dr. eng. habil. Zoltan-Iosif KORKA

E-mail: zoltan.korka@ubbcluj.ro

Web: https://eng.ubbcluj.ro/?page_id=405#tab-id-10





UNIVERSITATEA BABEȘ-BOLYAI
BABEȘ-BOLYAI TUDOMÁNYEGYETEM
BABEȘ-BOLYAI UNIVERSITÄT
BABEȘ-BOLYAI UNIVERSITY

TRADITIO ET EXCELLENTIA